

FEATURES	KNOCK-DOWN ROOF CURBS FOR YORK CHOICE UNITS	PROVENT P/N	A	EST. WEIGHT	SEISMIC CLIP KIT P/N
----------	---	-------------	---	-------------	----------------------

- Roof curb perimeter made of galvanized steel.
- Gasketing package provided.
- Heat treated wood nailer provided.
- Corner flanges are pre-threaded for easy bolt on assembly.
- Pitched, adjustable pitch/ adjustable height, welded, different height, isolation and calculated curbs are available.

AV, KV20-25; AW, KW13-15; AH, AL, KH, KL18-20; HV, WV15-20

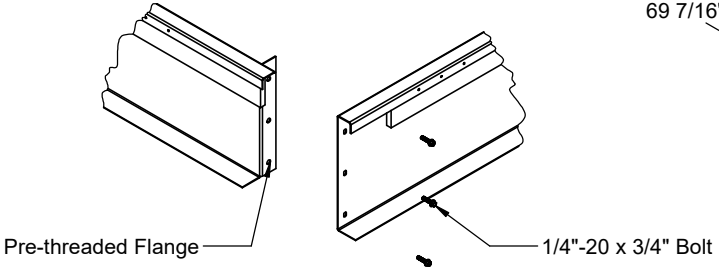
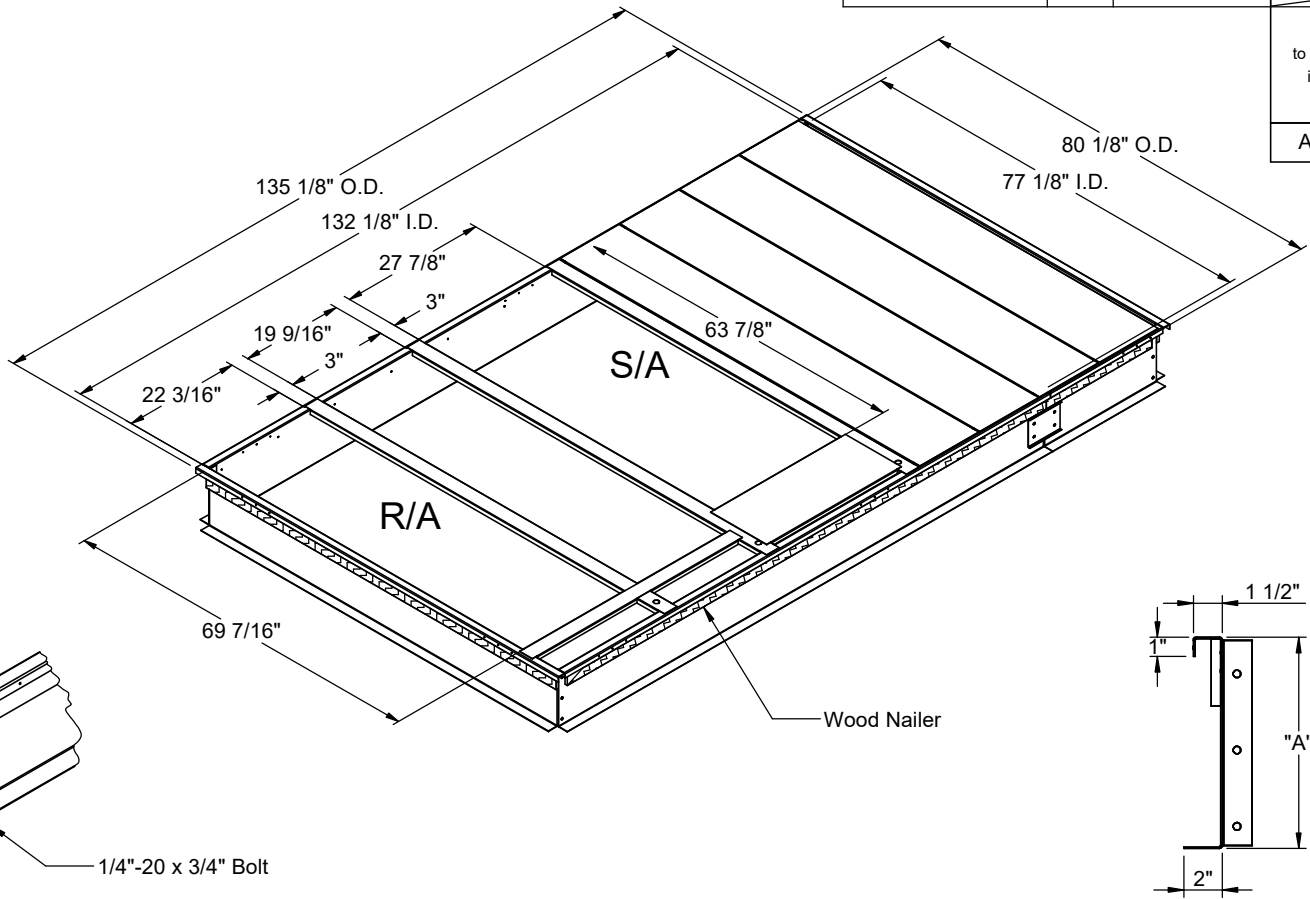
CBKDSAV202508**	08"	220 Lbs.
CBKDSAV202511**	11"	250 Lbs.
CBKDSAV202514**	14"	280 Lbs.
CBKDSAV202518**	18"	400 Lbs.
CBKDSAV202524**	24"	500 Lbs.

KDKITSAV2025

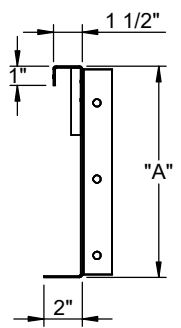
When conforming to CBC 2022 and IBC 2021, include optional seismic hold down clip kit.
Available for 8" - 18"

NOTES

Attach ductwork to roof curb. Flanges of duct rest on top of curb. Support ductwork below the curb.




CORNER DETAIL



CROSS SECTION DETAIL

CBKDSAV202518 is 12GA perimeter

	3847 WABASH DRIVE MIRA LOMA, CA 91752	SUBMITTED TO: _____ COMPANY: _____ JOB NAME: _____	FORM NO: -	PART NUMBER: CBKDSAV2025 SERIES	
	PHONE (951) 685-1101 FAX (619) 872-9799	EQUIPMENT: _____ NOTES: _____	DATE: 1/27/2025	REV: 5	DRAWN BY: CNG