

FEATURES

- Roof curb sides and ends are Galvanized material.
- Fully welded construction.
- Gasketing package provided.
- Heat treated wood nailer provided.

NOTES

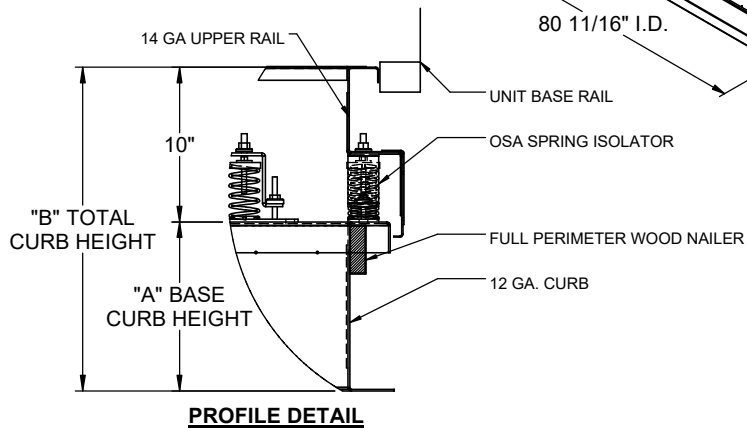
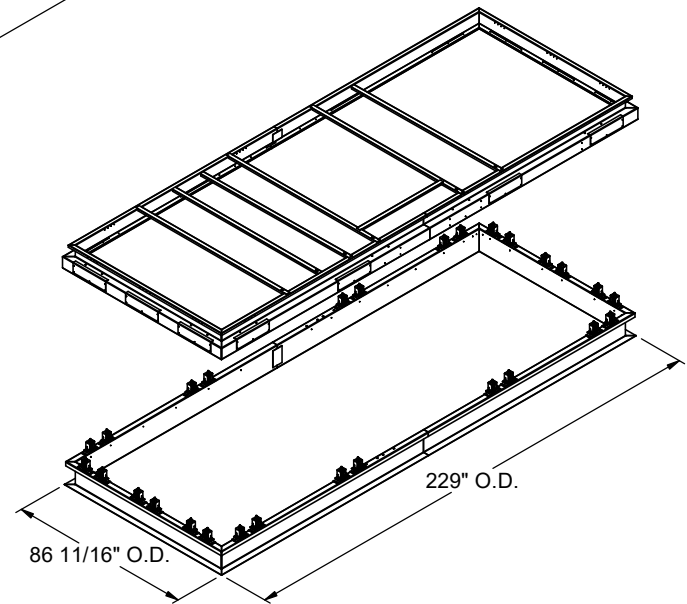
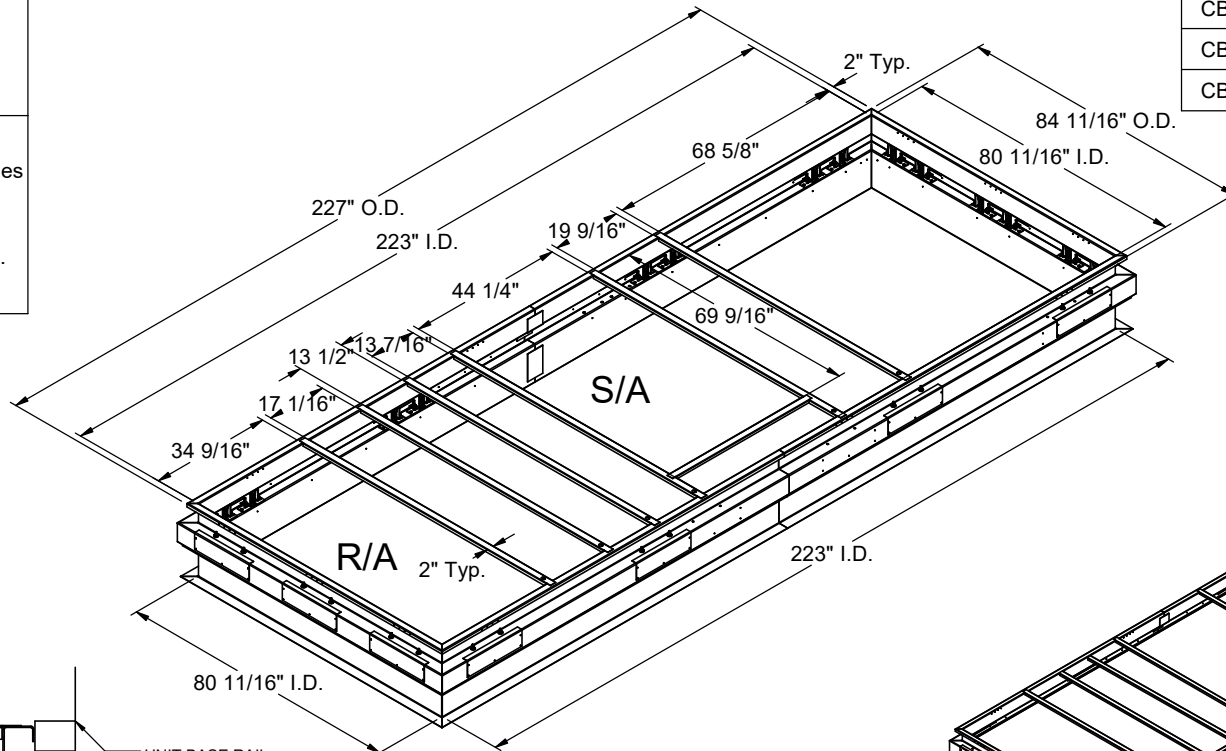
- Attach ductwork to roof curb. Flanges of duct rest on top of the curb, Support ductwork below the curb.
- Thru the curb utilities are available. Contact you York distributor or Provent directly.

**VIBRATION ISOLATION ROOF CURBS
YORK UNITS**

SUN SELECT 40-50 TON

PROVENT P/N	A	B	EST. WEIGHT
CBISSEL405018**	8"	18"	755 Lbs
CBISSEL405021**	11"	21"	805 Lbs
CBISSEL405024**	14"	24"	855 Lbs
CBISSEL405028**	18"	28"	980 Lbs

**Note: Spring configuration must be added to part number at time of order



3847 WABASH DRIVE
MIRA LOMA, CA 91752
PHONE (951) 685-1101
FAX (619) 872-9799

SUBMITTED TO: _____
COMPANY: _____
JOB NAME: _____
EQUIPMENT: _____
NOTES: _____

FORM NO:
CBIS-121
DATE:
9/23/2024

PART NUMBER:
CBISSEL4050 SERIES
REV:
-
DRAWN BY:
JR