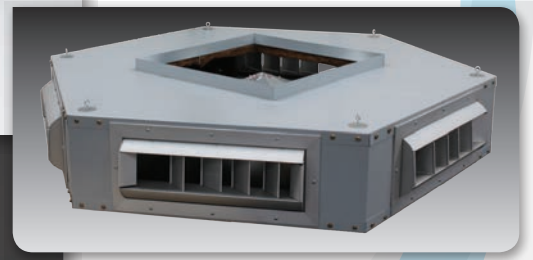
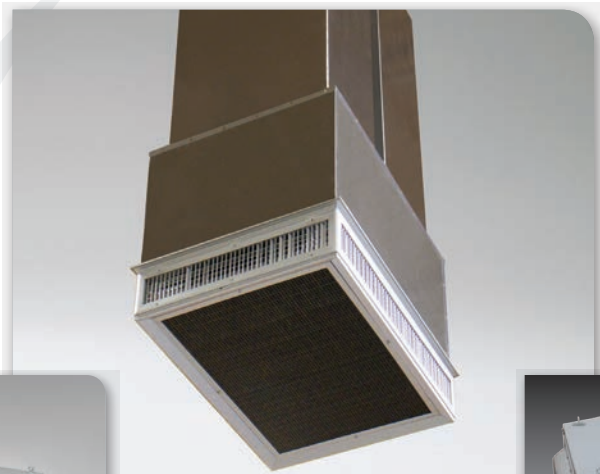
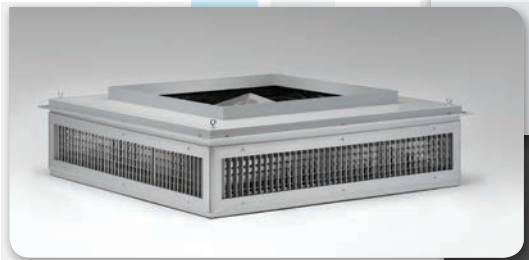


# RRS ROOFTOP SYSTEMS



---

## CONCENTRIC

Product Information & Applications

---

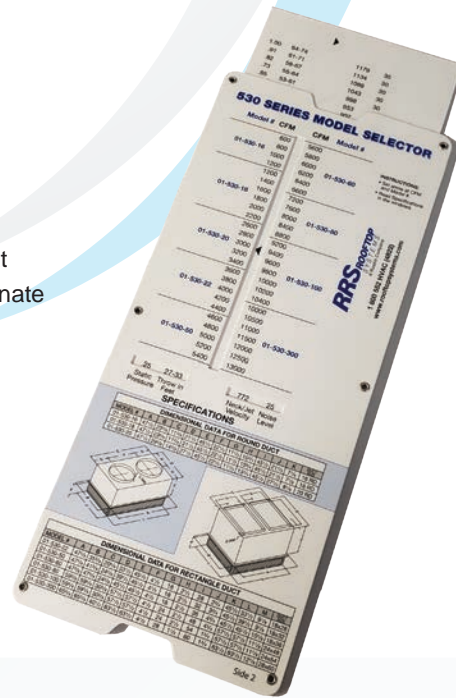
# CONCENTRICS

As the leading manufacturer of Concentric Diffusers for the past 30 years, Ruskin Rooftop Systems offers a cost effective way of distributing air in a simple and practical manner. Ruskin Rooftop Systems is the only manufacturer that provides a supply duct through return air transition, allowing even air flow on all four sides of the diffuser — this supply through transition offers 25% better air flow than the competition.

25% BETTER AIR FLOW

## Concentric Diffuser Selection Tool

Ruskin Rooftop Systems Concentric Diffuser Selection Tool helps you select the model and size of the concentric diffuser needed for your next job. Concentric Diffusers allow you to minimize your duct runs and eliminate multiple registers by integrating both supply and return air for an easy commercial installation.



## Table of Contents

<b>510 &amp; 515 Series</b> — Flush Mount System .....	3
<b>530 &amp; 535 Series</b> — Side Discharge System .....	6
<b>570 &amp; 575 Series</b> — Specialty Diffuser Systems .....	9
<b>578 Series</b> — 6 Way Drum Louver .....	12

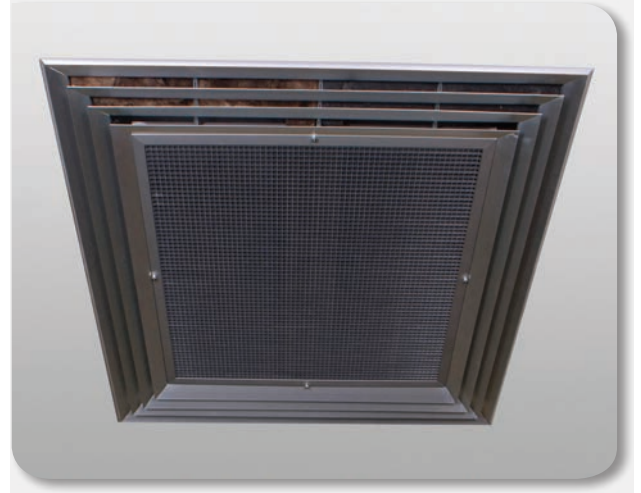
# 510 & 515 Series

FLUSH MOUNT  
CONCENTRIC DIFFUSER SYSTEM  
WITH FILTER GRILL

## Light Commercial 'T' Bar Ceiling



## Light Commercial Plaster Ceiling



RRS's 510 & 515 SERIES concentric diffuser systems are designed to provide a single point air distribution system. The systems may be used with either a "T-Bar" ceiling or a plaster ceiling.

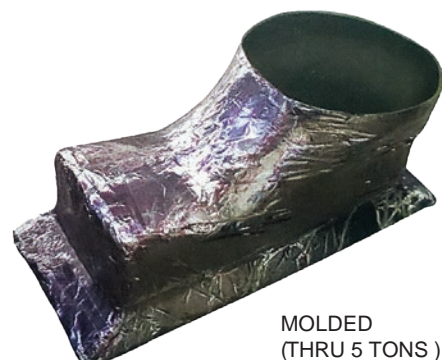
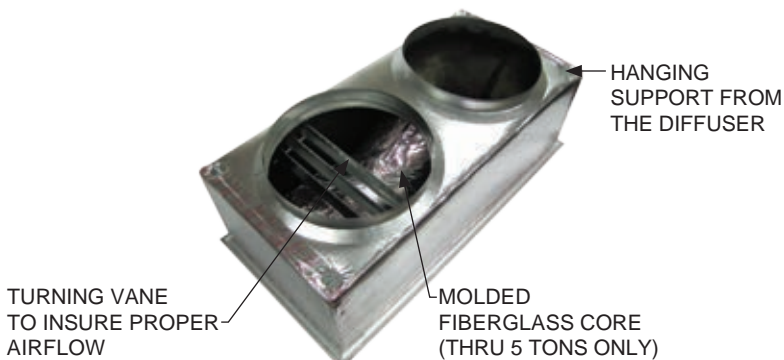
515 series — same as the 510 series, with an additional 4" fiberglass filter in the return section.

### Standard features include:

- All anodized aluminum diffuser frame with aluminum return air egg crate.
- Built-in Anti-Sweat gasket.
- Molded Fiberglass Core (thru five tons).
- Built-in hanging supports.
- Diffuser box constructed of fiberglass ductboard (thru 7.5 tons) or sheetmetal.
- Stainless steel thumb screws.

### Standard benefits include:

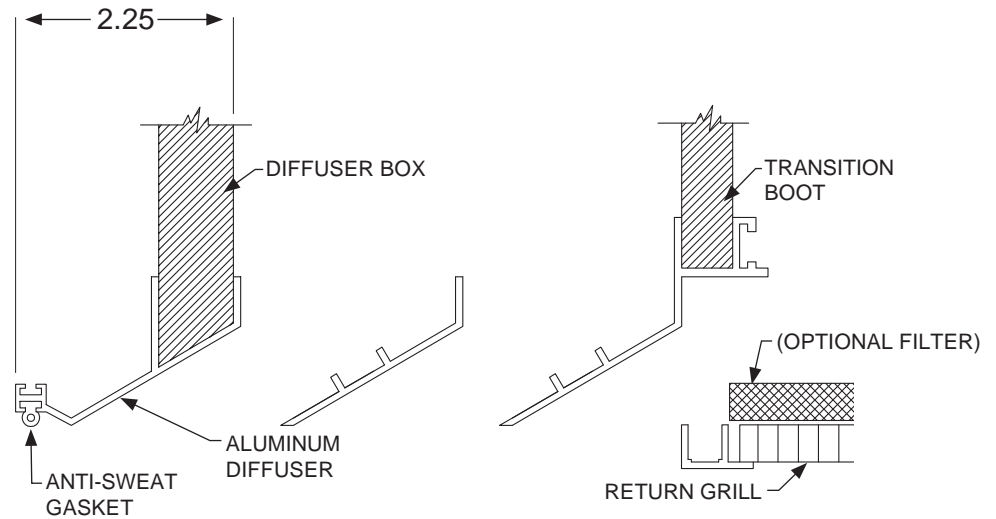
- Even four (4) way air distribution
- Lightweight design.
- Factory assembled and sealed.
- Guaranteed not to "sweat".
- Guaranteed not to recirculate airflow (short cycle).
- Return air eggcrate is easily removed.
- Units are fully insulated (both supply and return).



# 510 & 515 Series

## Typical specifications

Furnish and install Ruskin Rooftop Systems "510 & 515 SERIES" concentric diffuser systems. The system shall consist of an aluminum supply diffuser with an aluminum eggcrate return. It shall also have a permanent (not adhesive) anti-sweat gasket and hanging supports. All units that are five (5) tons and smaller shall have a molded fiberglass interior transition.



## 510 & 515 Series Concentric Diffuser Engineering Data

MODEL #	CFM	STATIC PRESSURE	THROW IN FEET	NECK VELOCITY	JET VELOCITY	NOISE LEVEL	UNIT WEIGHT
01-510-16B 01-515-16B	600	0.09	10-14	234	417	18	27.00
	800	0.11	12-18	313	556	20	27.00
	1000	0.14	15-20	391	691	20	27.00
	1200	0.17	16-22	469	833	25	27.00
	1400	0.20	17-24	547	972	30	27.00
01-510-18B 01-515-18B	1000	0.14	15-20	391	694	20	27.00
	1200	0.17	16-22	469	833	25	27.00
	1400	0.20	17-24	547	972	30	27.00
	1600	0.24	18-25	625	1111	30	27.00
	1800	0.30	20-28	703	1250	35	27.00
01-510-20B 01-515-20B	2000	0.36	21-29	781	1389	40	27.00
	2200	0.40	22-30	859	1528	40	27.00
	2600	0.17	19-24	663	1294	30	42.00
	2800	0.20	20-28	714	1393	35	42.00
	3000	0.25	21-29	765	1492	35	42.00
01-510-22B 01-515-22B	3200	0.31	22-29	816	1592	40	42.00
	3400	0.37	22-30	867	1692	40	42.00
	3600	0.17	22-29	844	1646	34	104.00
	4000	0.21	24-33	938	1829	40	104.00
	4400	0.27	28-37	1032	2011	40	104.00

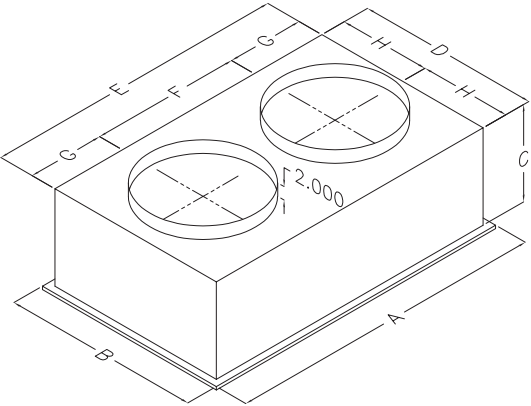
MODEL #	CFM	STATIC PRESSURE	THROW IN FEET	NECK VELOCITY	JET VELOCITY	NOISE LEVEL	UNIT WEIGHT
01-510-50B 01-515-50B	4500	0.31	25-34	922	1795	40	151.00
	5000	0.34	24-33	938	1829	40	151.00
	5400	0.39	32-41	1083	2107	45	151.00
01-510-60B 01-515-60B	5600	0.36	28-37	1000	2082	45	158.00
	6000	0.42	40-50	1071	2230	45	158.00
	6400	0.50	43-52	1143	2379	50	158.00
	6600	0.54	45-56	1179	2454	50	158.00
	7200	0.39	26-35	996	2093	45	197.00
	8000	0.50	42-51	1107	2326	50	197.00
01-510-80B 01-515-80B	8400	0.56	44-54	1162	2442	50	197.00
	8800	0.63	48-59	1217	2558	50	197.00
	9600	0.41	32-41	1036	2159	45	197.00
01-510-100B 01-515-100B	10000	0.45	37-46	1079	2249	45	197.00
	10400	0.50	42-51	1122	2339	50	197.00
	10000	0.57	37-46	713	1506	35	244.00
01-510-300B 01-515-300B	11000	0.72	46-56	785	1657	35	244.00
	12000	0.90	54-66	856	1808	40	244.00
	13000	1.10	62-75	927	1958	40	244.00

1. All data is based on the Air Diffusion Council guidelines.
2. Throw data is based on Terminal Velocities of 75 FPM using isothermal air.
3. "Neck Velocity" is the speed in feet per minute of the air coming into the diffusers – similar to duct velocity.\*
4. "Jet Velocity" is the speed in feet per minute of the air exiting the diffusers.\*
5. Actual noise levels are less than those shown.

\* Jet velocity is higher than neck velocity on the (510) flush mount diffusers because the air gets "pinched down" as it exits – similar to high pressure water coming out of a garden hose with a sprayer.

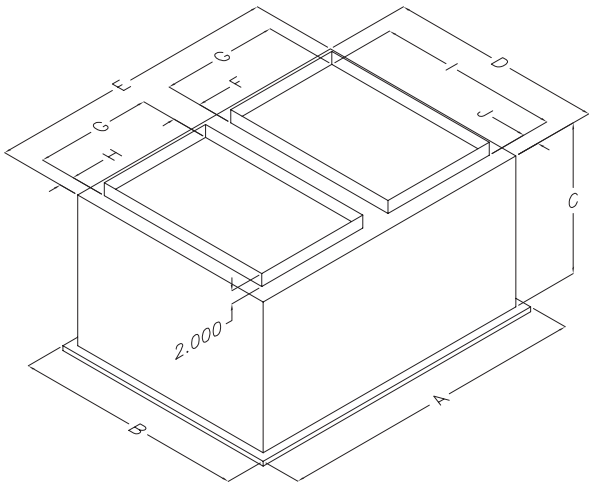
The drop down (530) diffusers have enough face area in the supply grills so that the air velocity does not increase significantly as it exits the concentric. That is why "Neck Velocity" and "Jet Velocity" are the same for the drop downs.

**FLUSH MOUNT  
CONCENTRIC DIFFUSER SYSTEM  
WITH FILTER GRILL**



**Dimensional Data**

RRS MODEL #	A	B	C	D	E	F	G	H	DUCT SIZE
01-510-16B 01-515-16B	47 <sup>5/8</sup>	23 <sup>5/8</sup>	13 <sup>1/2</sup>	21	45	22 <sup>1/2</sup>	11 <sup>1/4</sup>	10 <sup>1/2</sup>	16 RD
01-510-18B 01-515-18B	47 <sup>5/8</sup>	23 <sup>5/8</sup>	13 <sup>1/2</sup>	21	45	22 <sup>1/2</sup>	11 <sup>1/4</sup>	10 <sup>1/2</sup>	18 RD
01-510-20B 01-515-20B	47 <sup>5/8</sup>	29 <sup>5/8</sup>	16 <sup>5/8</sup>	27	45	22 <sup>1/2</sup>	11 <sup>1/4</sup>	13 <sup>1/2</sup>	20 RD



**Dimensional Data**

RRS MODEL #	A	B	C	D	E	F	G	H	I	J	DUCT SIZE
01-510-22B 01-515-22B	47 <sup>5/8</sup>	35 <sup>5/8</sup>	23 <sup>1/4</sup>	33	45	4 <sup>1/2</sup>	18	2 <sup>1/4</sup>	28	2 <sup>1/2</sup>	18x28
01-510-50B 01-515-50B	47 <sup>5/8</sup>	41 <sup>5/8</sup>	29 <sup>1/4</sup>	39	45	4 <sup>1/2</sup>	18	2 <sup>1/4</sup>	32	3 <sup>1/4</sup>	18x32
01-510-60B 01-515-60B	47 <sup>5/8</sup>	47 <sup>5/8</sup>	29 <sup>1/4</sup>	45	45	4 <sup>1/2</sup>	18	2 <sup>1/4</sup>	36	4 <sup>1/2</sup>	18x36
01-510-80B 01-515-80B	59 <sup>5/8</sup>	59 <sup>5/8</sup>	35 <sup>1/4</sup>	57	57	4 <sup>1/2</sup>	24	2 <sup>1/4</sup>	48	4 <sup>1/2</sup>	24x48
01-510-100B 01-515-100B	59 <sup>5/8</sup>	59 <sup>5/8</sup>	35 <sup>1/4</sup>	57	57	4 <sup>1/2</sup>	24	2 <sup>1/4</sup>	54	1 <sup>1/2</sup>	24x54
01-510-300B 01-515-300B	65 <sup>5/8</sup>	65 <sup>5/8</sup>	40	63 <sup>1/8</sup>	63 <sup>1/2</sup>	4 <sup>1/2</sup>	28	1 <sup>1/4</sup>	60	1 <sup>1/2</sup>	28x60

# 530 & 535 Series

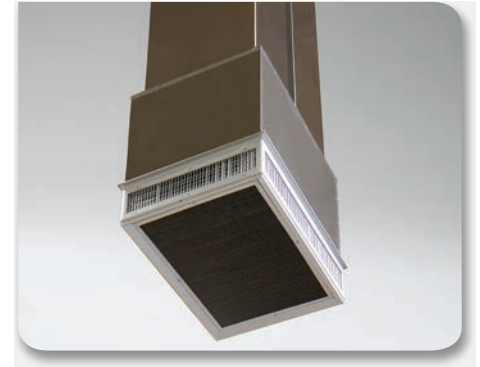
## Light Commercial Plaster Ceiling



## Commercial 'T' Bar Ceiling



## Open Ceiling



**RRS's 530 & 535 SERIES** concentric diffuser systems are designed to provide a single point air distribution system with the added benefit of having directional air control. The systems may be used with either a "T-Bar" ceiling, a plaster ceiling, or with no ceiling at all.

535 Series — Same as the 530 series, with an additional 1" Hogs Hair filter in the return section.

### Standard features include:

- All anodized aluminum diffuser frame with aluminum return air egg crate.
- Double deflection diffuser with the blades secured by spring steel.
- Built-in Anti-Sweat gasket.
- Molded Fiberglass Transition (thru five tons).
- Built-in hanging supports.
- Diffuser box constructed of fiberglass ductboard (thru 7.5 tons) or sheetmetal.
- Stainless steel thumb screws.

### Standard benefits include:

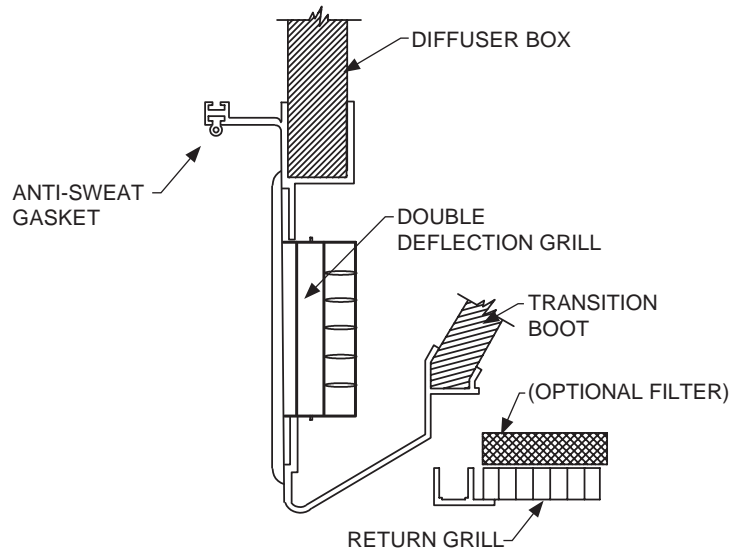
- Even four (4) way air distribution.
- All exposed surfaces (below ceiling) are brushed aluminum.
- Factory assembled and sealed.
- Guaranteed not to "sweat".
- Guaranteed not to recirculate airflow (short cycle).
- Return air eggcrate is easily removed.
- Units are fully insulated (both supply and return).
- Lightweight design.



## SIDE DISCHARGE CONCENTRIC DIFFUSER SYSTEM WITH FILTER GRILL

### Typical specifications

Furnish and install Ruskin Rooftop Systems “530 & 535 SERIES” concentric diffuser systems. The system shall consist of an aluminum double deflection supply diffuser with an aluminum eggcrate return. ALL EXPOSED SURFACES (BELOW CEILING) MUST BE BRUSHED ALUMINUM. It shall also have a permanent (not adhesive) anti-sweat gasket and hanging supports. All units that are five (5) tons and smaller shall have a molded fiberglass interior transition.



### 530 & 535 Series Concentric Diffuser Engineering Data

RRS MODEL#	CFM	STATIC PRESSURE	THROW FEET	NECK/JET VELOCITY	NOISE LEVEL	UNIT WEIGHT
01-530-16B	600	0.09	8-15	210	20	38
	800	0.11	9-16	281	20	38
01-535-16B	1000	0.14	10-17	351	20	38
	1200	0.17	11-18	421	20	38
01-530-18B	1200	0.17	11-18	421	20	38
	1400	0.20	12-19	491	20	38
	1600	0.24	12-20	561	20	38
	1800	0.30	13-21	632	20	38
	2000	0.36	14-23	702	20	38
	2200	0.40	16-25	772	20	38
01-530-20B	2600	0.17	24-29	669	20	82
	2800	0.20	25-30	720	25	82
	3000	0.25	27-33	772	25	82
	3200	0.31	28-35	823	25	82
	3400	0.37	30-37	874	30	82
01-530-22B	3600	0.17	25-33	851	30	122
	3800	0.18	27-35	898	30	122
	4000	0.21	29-37	946	30	122
	4200	0.24	32-40	993	30	122
01-530-50B	4400	0.27	34-42	1040	30	122
	4600	0.31	26-31	841	30	145
	4800	0.32	27-32	878	30	145
01-535-50B	5000	0.34	28-33	915	30	145
	5200	0.36	28-34	951	30	145
	5400	0.39	29-35	988	30	145

RRS MODEL#	CFM	STATIC PRESSURE	THROW FEET	NECK/JET VELOCITY	NOISE LEVEL	UNIT WEIGHT
01-530-60B	5600	0.36	39-49	920	30	217
	5800	0.39	42-51	954	30	217
	6000	0.42	44-54	1022	30	217
	6200	0.46	45-55	1056	30	217
	6400	0.50	46-55	1090	30	217
	6600	0.54	47-56	1124	30	217
01-530-80B	7200	0.39	33-38	827	25	238
	7600	0.43	36-41	873	25	238
	8000	0.50	39-44	918	30	238
	8400	0.56	43-49	964	30	238
	8800	0.63	47-55	1010	30	238
	9200	0.74	49-57	1056	50	238
01-530-100B	9400	0.80	50-58	1079	55	238
	9600	0.83	52-62	1102	55	238
	9800	0.86	55-63	1125	55	238
	10000	1.00	57-65	1148	55	238
	10200	1.07	60-68	1171	60	238
	10400	1.16	63-71	1194	60	238
01-530-300B	10000	.51	46-54	907	30	285
	10500	.58	50-58	953	30	285
	11000	.65	53-61	998	30	285
	11500	.73	55-64	1043	30	285
	12000	.82	58-67	1089	30	285
	12500	.91	61-71	1134	30	285
01-535-300B	13000	1.00	64-74	1179	35	285

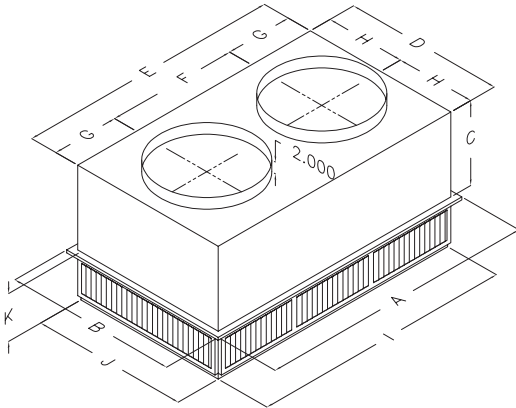
- All data is based on the Air Diffusion Council guidelines.
- Throw data is based on Terminal Velocities of 75 FPM using isothermal air.
- "Neck Velocity" is the speed in feet per minute of the air coming into the diffusers – similar to duct velocity.\*
- "Jet Velocity" is the speed in feet per minute of the air exiting the diffusers.\*
- Actual noise levels are less than those shown.
- Throw is based on diffuser blades being directed in a straight pattern.

\* Jet velocity is higher than neck velocity on the (510) flush mount diffusers because the air gets "pinched down" as it exits – similar to high pressure water coming out of a garden hose with a sprayer.

The drop down (530) diffusers have enough face area in the supply grills so that the air velocity does not increase significantly as it exits the concentric. That is why "Neck Velocity" and "Jet Velocity" are the same for the drop downs.

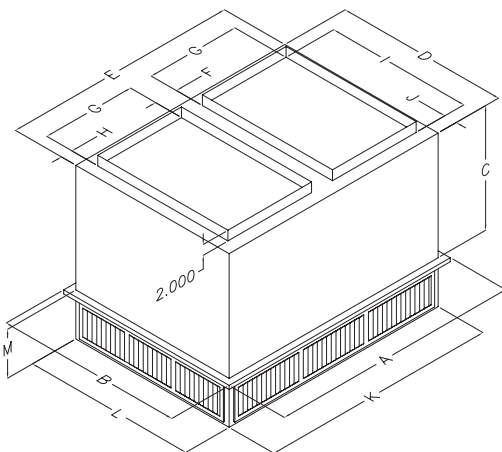
# 530 & 535 Series

## SIDE DISCHARGE CONCENTRIC DIFFUSER SYSTEM WITH FILTER GRILL



### Dimensional Data

RRS MODEL #	A	B	C	D	E	F	G	H	I	J	K	DUCT SIZE
01-530-16B 01-535-16B	47 <sup>5</sup> / <sub>8</sub>	23 <sup>5</sup> / <sub>8</sub>	11 <sup>3</sup> / <sub>8</sub>	21 <sup>1</sup> / <sub>2</sub>	45 <sup>1</sup> / <sub>2</sub>	22 <sup>1</sup> / <sub>2</sub>	11 <sup>1</sup> / <sub>2</sub>	10 <sup>3</sup> / <sub>4</sub>	45 <sup>1</sup> / <sub>2</sub>	21 <sup>1</sup> / <sub>2</sub>	7 <sup>1</sup> / <sub>8</sub>	16 RD
01-530-18B 01-535-18B	47 <sup>5</sup> / <sub>8</sub>	23 <sup>5</sup> / <sub>8</sub>	11 <sup>3</sup> / <sub>8</sub>	21 <sup>1</sup> / <sub>2</sub>	45 <sup>1</sup> / <sub>2</sub>	22 <sup>1</sup> / <sub>2</sub>	11 <sup>1</sup> / <sub>2</sub>	10 <sup>3</sup> / <sub>4</sub>	45 <sup>1</sup> / <sub>2</sub>	21 <sup>1</sup> / <sub>2</sub>	7 <sup>1</sup> / <sub>8</sub>	18 RD
01-530-20B 01-535-20B	47 <sup>5</sup> / <sub>8</sub>	29 <sup>5</sup> / <sub>8</sub>	14 <sup>3</sup> / <sub>8</sub>	27 <sup>1</sup> / <sub>2</sub>	45 <sup>1</sup> / <sub>2</sub>	22 <sup>1</sup> / <sub>2</sub>	11 <sup>1</sup> / <sub>2</sub>	13 <sup>3</sup> / <sub>4</sub>	45 <sup>1</sup> / <sub>2</sub>	27 <sup>1</sup> / <sub>2</sub>	8 <sup>1</sup> / <sub>8</sub>	20 RD



### Dimensional Data

RRS MODEL #	A	B	C	D	E	F	G	H	I	J	K	L	M	DUCT SIZE
01-530-22B 01-535-22B	47 <sup>5</sup> / <sub>8</sub>	35 <sup>5</sup> / <sub>8</sub>	20 <sup>5</sup> / <sub>8</sub>	33 <sup>1</sup> / <sub>2</sub>	45 <sup>1</sup> / <sub>2</sub>	4 <sup>1</sup> / <sub>2</sub>	18	2 <sup>1</sup> / <sub>2</sub>	28	2 <sup>3</sup> / <sub>4</sub>	45 <sup>1</sup> / <sub>2</sub>	33 <sup>1</sup> / <sub>2</sub>	9 <sup>1</sup> / <sub>8</sub>	18 x 28
01-530-50B 01-535-50B	47 <sup>5</sup> / <sub>8</sub>	41 <sup>5</sup> / <sub>8</sub>	24 <sup>5</sup> / <sub>8</sub>	39 <sup>1</sup> / <sub>2</sub>	45 <sup>1</sup> / <sub>2</sub>	4 <sup>1</sup> / <sub>2</sub>	18	2 <sup>1</sup> / <sub>2</sub>	32	3 <sup>3</sup> / <sub>4</sub>	45 <sup>1</sup> / <sub>2</sub>	39 <sup>1</sup> / <sub>2</sub>	9 <sup>1</sup> / <sub>8</sub>	18 x 32
01-530-60B 01-535-60B	47 <sup>5</sup> / <sub>8</sub>	47 <sup>5</sup> / <sub>8</sub>	24 <sup>5</sup> / <sub>8</sub>	45 <sup>1</sup> / <sub>2</sub>	45 <sup>1</sup> / <sub>2</sub>	4 <sup>1</sup> / <sub>2</sub>	18	2 <sup>1</sup> / <sub>2</sub>	36	4 <sup>3</sup> / <sub>4</sub>	45 <sup>1</sup> / <sub>2</sub>	45 <sup>1</sup> / <sub>2</sub>	10 <sup>1</sup> / <sub>8</sub>	18 x 36
01-530-80B 01-535-80B	59 <sup>5</sup> / <sub>8</sub>	59 <sup>5</sup> / <sub>8</sub>	30 <sup>5</sup> / <sub>8</sub>	57 <sup>1</sup> / <sub>2</sub>	57 <sup>1</sup> / <sub>2</sub>	4 <sup>1</sup> / <sub>2</sub>	24	2 <sup>1</sup> / <sub>2</sub>	48	4 <sup>3</sup> / <sub>4</sub>	57 <sup>1</sup> / <sub>2</sub>	57 <sup>1</sup> / <sub>2</sub>	11 <sup>1</sup> / <sub>8</sub>	24 x 48
01-530-100B 01-535-100B	59 <sup>5</sup> / <sub>8</sub>	59 <sup>5</sup> / <sub>8</sub>	30 <sup>5</sup> / <sub>8</sub>	57 <sup>1</sup> / <sub>2</sub>	57 <sup>1</sup> / <sub>2</sub>	4 <sup>1</sup> / <sub>2</sub>	24	2 <sup>1</sup> / <sub>2</sub>	54	1 <sup>3</sup> / <sub>4</sub>	57 <sup>1</sup> / <sub>2</sub>	57 <sup>1</sup> / <sub>2</sub>	11 <sup>1</sup> / <sub>8</sub>	24 x 54
01-530-300B 01-535-300B	65 <sup>5</sup> / <sub>8</sub>	65 <sup>5</sup> / <sub>8</sub>	40 <sup>1</sup> / <sub>2</sub>	63 <sup>1</sup> / <sub>2</sub>	63 <sup>1</sup> / <sub>2</sub>	4 <sup>1</sup> / <sub>2</sub>	28	1 <sup>1</sup> / <sub>2</sub>	60	1 <sup>3</sup> / <sub>4</sub>	63 <sup>1</sup> / <sub>2</sub>	63 <sup>1</sup> / <sub>2</sub>	12 <sup>1</sup> / <sub>8</sub>	28 x 60

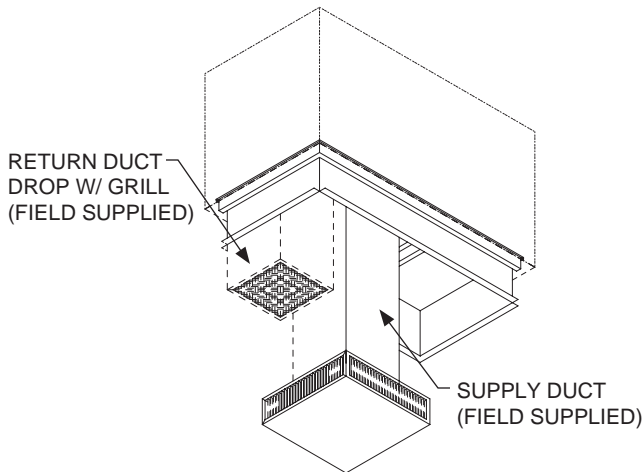


# 570 & 575 Series

## SPECIALTY DIFFUSER SYSTEMS FOR OPEN CEILING APPLICATIONS

### RRS's 570 SERIES

#### DOUBLE DEFLECTION SUPPLY DIFFUSERS



RRS's 570 SERIES supply diffuser systems are designed to provide an air distribution system with the benefit of having directional air control. The system is ideal for open ceiling applications that need single point supply air with control over where the air is distributed.

#### Standard features include:

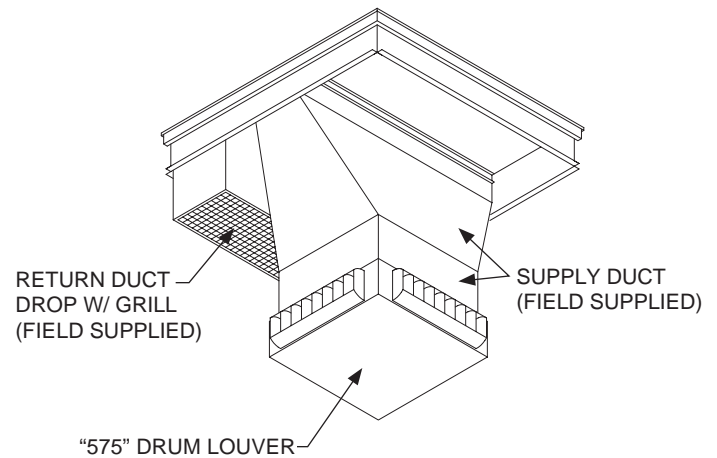
- All aluminum diffuser.
- Double deflection diffuser with blades secured with spring steel.
- Internal air deflector for quiet operation and low static.
- Built in Duct Cap with hanging supports.

#### Typical specifications

Furnish and install Ruskin Rooftop Systems "570 Series Supply diffuser systems with Duct Cap." The system shall consist of an extruded aluminum frame, aluminum **double deflection** supply diffusers, a 20 gauge galvanized steel bottom panel powder painted to match the aluminum extrusion, an insulated internal transition to ensure quiet, even airflow, and an insulated duct cap with hanging supports.

### RRS's 575 SERIES

#### DRUM LOUVER DIFFUSERS



RRS's 575 SERIES supply diffuser systems are designed to provide an air distribution system with the benefit of having directional air control. The system is ideal for open ceiling applications that need single point supply air with long throws. The Drum Louver allows you to "spot" the air where you need it the most.

#### Standard features include:

- All aluminum diffuser.
- Drum Louver diffusers for installations that are high above the floor.
- Internal air deflector for quiet operation and low static.
- Built in Duct Cap with hanging supports.

#### Typical specifications

Furnish and install Ruskin Rooftop Systems "575 Series Supply diffuser systems with Duct Cap." The system shall consist of aluminum **drum louver** supply diffusers, an internal transition to ensure quiet, even airflow, and an insulated duct cap with hanging supports.

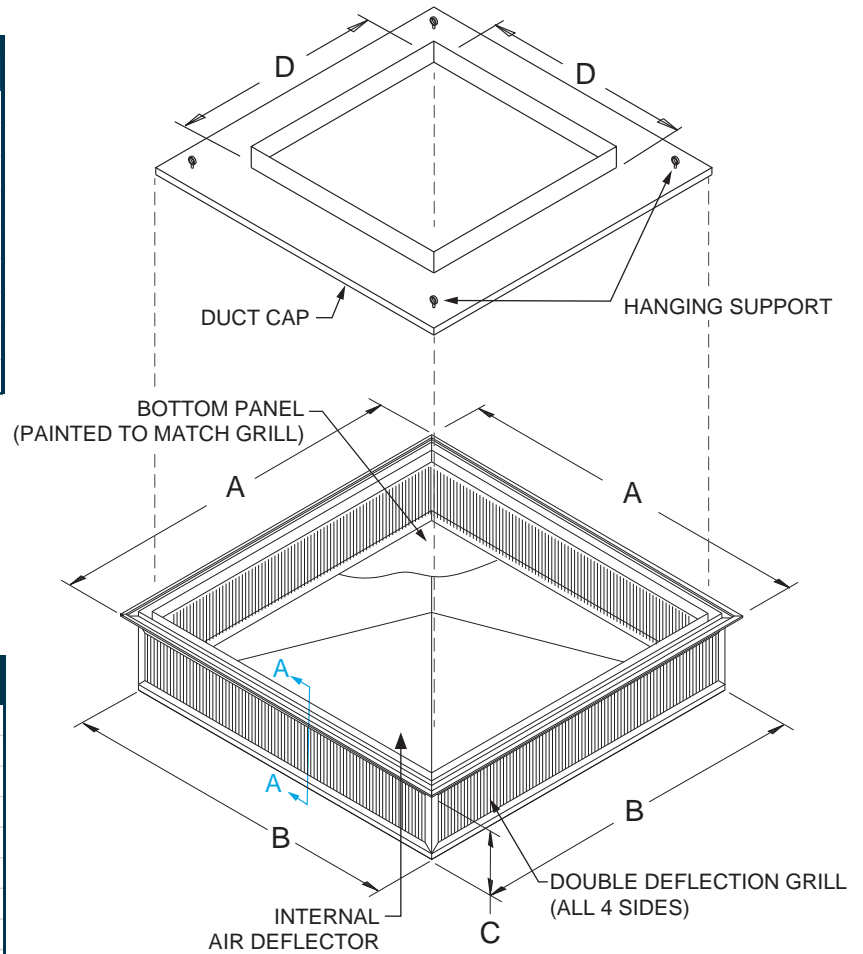
# 570 Series

## DOUBLE DEFLECTION SUPPLY DIFFUSERS

### Dimensional Data

RRS MODEL#	A	B	C	DUCTSIZE D
01-570-2418BR	23 5/8	22 1/4	6 1/4	18 RD
01-570-2418B	23 5/8	22 1/4	6 1/4	18
01-570-3620BR	35 5/8	34 1/4	7 1/4	20 RD
01-570-3624B	35 5/8	34 1/4	7 1/4	24
01-570-4028B	39 5/8	38 1/4	10 1/4	28
01-570-4030B	39 5/8	38 1/4	10 1/4	30
01-570-8036B	59 5/8	58 1/4	9 1/4	36
01-570-8042B	59 5/8	58 1/4	9 1/4	42
01-570-30044B	65 5/8	64 1/4	10 1/4	44

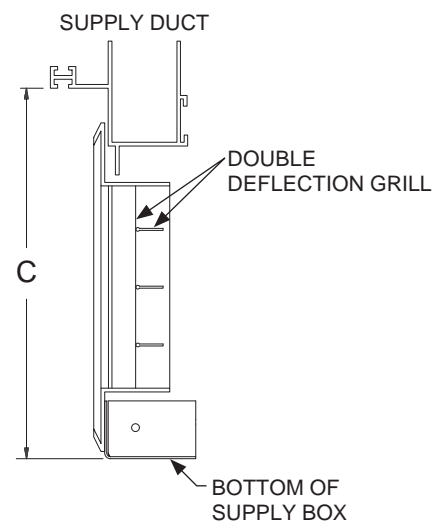
1. For white diffusers change the "01" numbers to "90." Example: 90-570-2418B



### Engineering Data

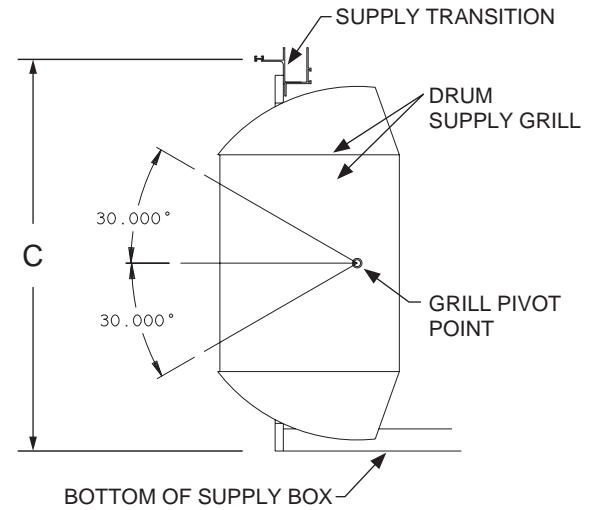
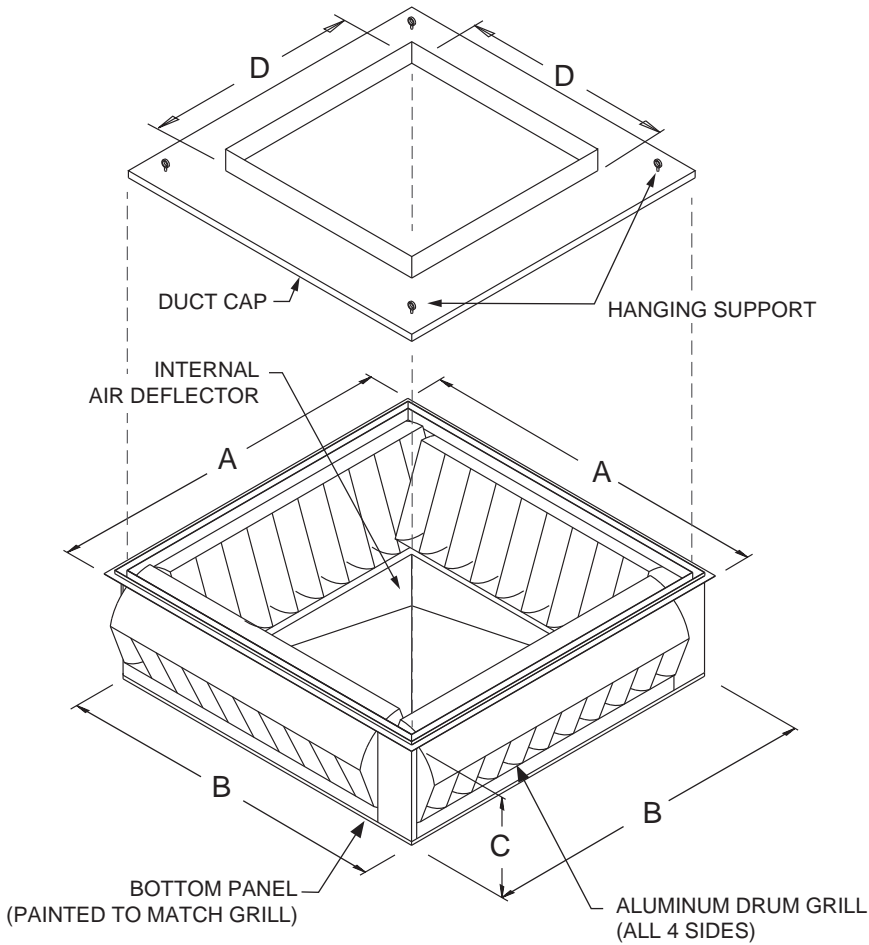
RRS MODEL#	CFM	NECK VEL.	STATIC	THROW	NOISE	UNIT WEIGHT
01-570-2418BR 01-570-2418B	600	270	0.04	12-17	20	25
	800	364	0.06	16-22	20	25
	1000	450	0.07	20-28	20	25
	1200	536	0.09	24-33	20	25
	1400	625	0.11	28-39	20	25
	1600	714	0.14	33-44	25	25
	1800	804	0.16	41-52	30	25
01-570-3620BR 01-570-3624B	2000	893	0.19	46-55	30	25
	3600	810	0.19	49-54	25	51
	3800	863	0.21	50-55	25	51
	4000	909	0.23	51-56	30	51
	4200	955	0.26	53-60	30	51
01-570-4028B 01-570-4030B	4400	1000	0.30	54-62	30	51
	5400	1116	0.18	45-53	30	80
	5600	1157	0.19	47-55	30	80
	5800	1198	0.22	50-57	30	80
	6000	1240	0.25	53-59	30	80
	6200	1281	0.27	54-61	35	80
	6400	1322	0.30	56-63	35	80
	6600	1364	0.33	58-65	35	80
01-570-8036B 01-570-8042B	7000	1405	0.37	59-67	35	80
	7200	827	0.18	33-38	25	175
	8000	918	0.20	39-44	25	175
	8800	1010	0.22	47-55	30	175
01-570-30044B	9600	1101	0.27	54-62	30	175
	10000	1148	0.30	57-65	35	175
	11200	1140	0.30	44-65	40	212
	12000	1300	0.34	52-70	40	212

### Section A-A



# 575 Series

## DRUM LOUVER DIFFUSERS



### Dimensional Data

RRS MODEL#	A	B	C	DUCT SIZE D	GRILL SIZE	UNIT WEIGHT
01-575-150620B	24 5/8	22 1/2	9	20	15 x 6	47
01-575-201024B	29 5/8	27 1/2	13	24	20 x 10	53
01-575-251028B	34 5/8	32 1/2	13	28	25 x 10	62
01-575-351036B	44 5/8	42 1/2	13	36	35 x 10	91
01-575-401042B	49 5/8	47 1/2	13	42	40 x 10	124
01-575-501044B	59 5/8	57 1/2	13	44	50 x 10	151
01-575-601542B	49 5/8	47 1/2	18	42	40 x 15	134
01-575-801544B	59 5/8	57 1/2	18	44	50 x 15	161

### Engineering Data

RRS MODEL#	CFM	30° DEFLECTION			0° DEFLECTION		
		NOISE	STATIC	THROW	NOISE	STATIC	THROW
01-575-150620B	1200-2000	<30	0.420	12-16	<25	0.29	16-20
01-575-201024B	4000-5000	<45	0.420	34-37	<40	0.29	40-45
01-575-251028B	6000	<45	0.508	39	<40	0.33	48
01-575-351036B	8000	<45	0.440	47	<40	0.30	63
01-575-401042B	10000	<45	0.528	46	<40	0.33	62
01-575-501044B	12000	<45	0.543	56	<40	0.35	72
01-575-601542B	14000	<45	0.528	48	<40	0.33	59
01-575-801544B	16000	<45	0.543	54	<40	0.35	65

1. For white diffusers change the "01" numbers to "90." Example: 90-575-150620B

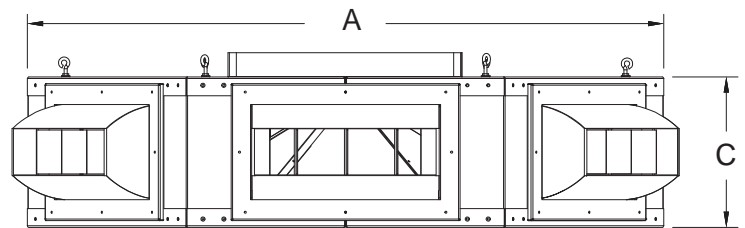
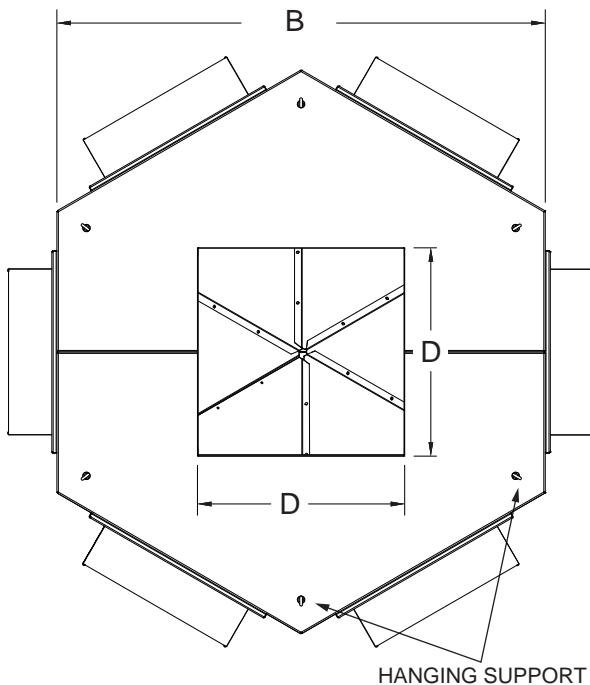
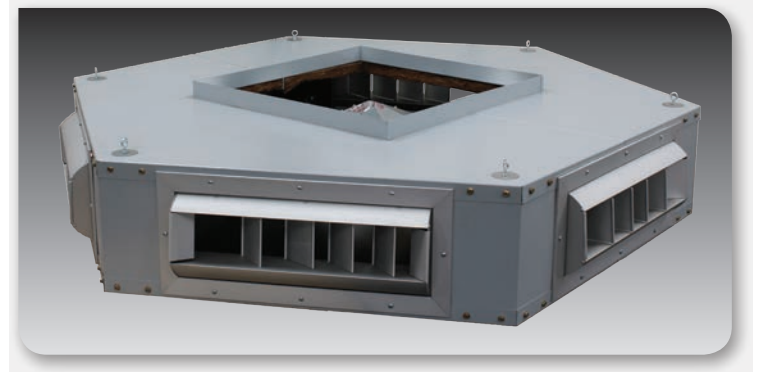
# 578 Series

## 6 WAY DRUM LOUVER DIFFUSERS

RRS's 578 SERIES supply diffuser systems are designed to provide an air distribution system with the benefit of having directional air control. The system is ideal for open ceiling applications that need single point supply air with long throws. The 6 way Drum Louver allows you to "spot" the air where you need it most.

### Standard features include:

- Heavy duty construction
- Drum louvers diffusers for high installations
- Internal air deflector for quiet operation
- Built in Duct Cap with hanging supports



### Dimensional Data

RRS MODEL#	A	B	C	DUCT SIZE D	GRILL SIZE	UNIT WEIGHT
01-578-05	38 1/16	33	9	14	12 x 6	66
01-578-10	56 9/16	49	9	22	18 x 6	96
01-578-20	64 5/8	56	13	28	25 x 10	136
01-578-25	77 5/16	67	13	30	30 x 12	176

### Engineering Data

RRS MODEL#	CFM	NOISE	30° DEFLECTION		NOISE	0° DEFLECTION	
			STATIC	THROW		STATIC	THROW
01-578-05	2000	<30	0.420	12-16	<25	0.29	16-20
01-578-10	4000	<45	0.420	34-37	<40	0.29	40-45
01-578-20	6000-7000	<45	0.508	39	<40	0.33	48
01-578-25	8000-10000	<45	0.528	46	<40	0.33	62

1. For white diffusers change the "01" numbers to "90." Example: 90-578-20



1625 Diplomat Drive, Carrollton, Texas 75006-6510  
 Phone (972) 247-7447 (800) 552-HVAC Fax (972) 243-0940

[www.ruskinrooftopsystems.com](http://www.ruskinrooftopsystems.com)