

For wood, concrete and steel attachments see Roof Anchorage Detail, Form No. CB-24A.

Welded isolation spring housings are standard. For bolted spring housings, neoprene pads and spring cups see Weldment and Bolting Detail, Form No. ISCAL-131.

FEATURES

- Roof curb sides and ends are 14 ga. galvanized steel.
- Fully welded construction.
- Gasketing package provided.
- Heat treated wood nailer provided.
- Insulated deck pans provided.
- Pitched curbs and taller curbs are available.
- CalDyn OSHPD pre-approved 2" or 3" deflection seismic restraints. (OPA-0070), (JQB).

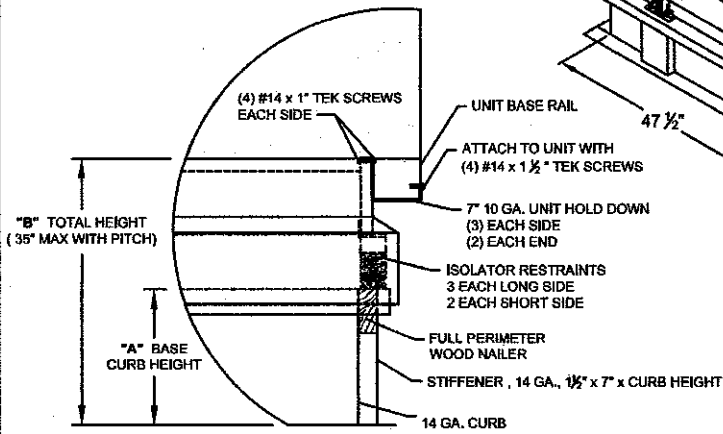
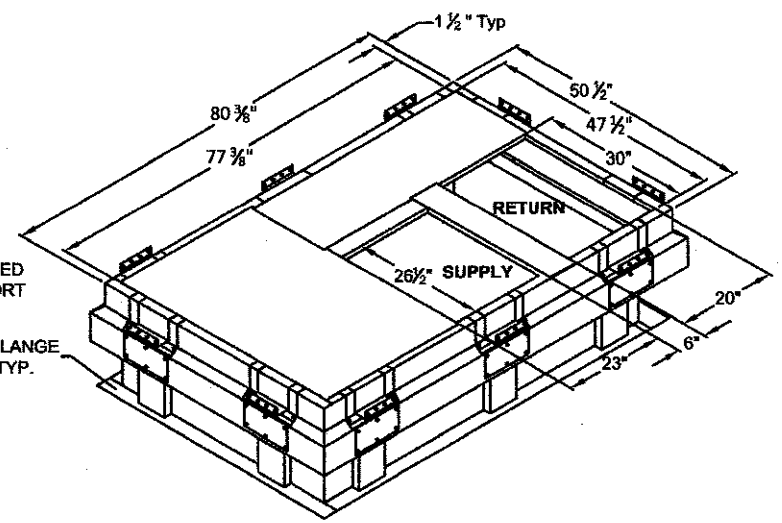
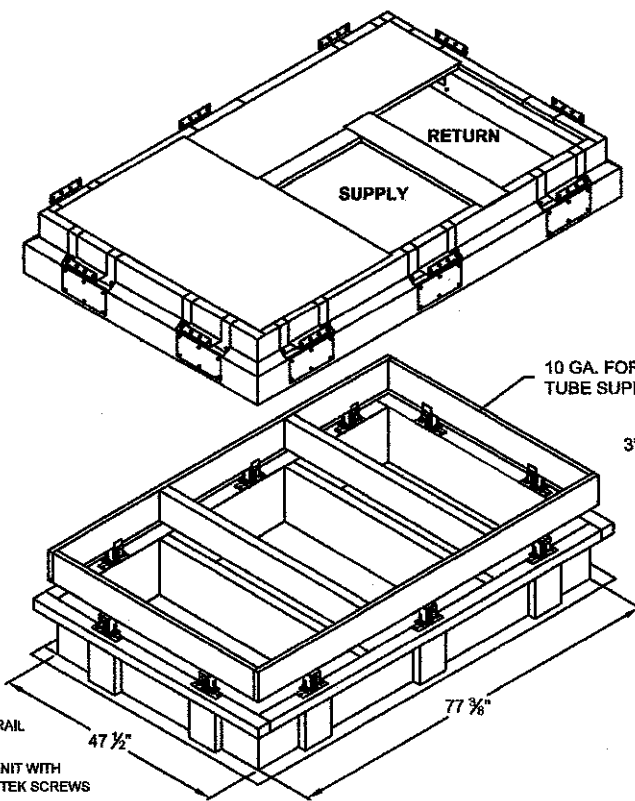
NOTES

- Attach ductwork to roof curb. Flanges of duct rest on top of curb. Support ductwork below the curb.
- Thru the curb utilities are available. Contact your York distributor or ProVent directly.

STRUCTURALLY CALCULATED VIBRATION ISOLATION CURBS FOR YORK UNITS

ZT, ZH, ZJ, ZR 037, 049, 061
ZF, ZH, ZJ, ZR, XP, DH, DM, DF, DR, BP 078-150

ProVent P/N (2" Deflection)	A	B	Wt.	ProVent P/N (3" Deflection)	A	B	Wt.
ISCALPRD371519**	8"	19"	494 Lbs	ISCALPRD3715193**	8"	19"	494 Lbs
ISCALPRD371522**	11"	22"	511 Lbs	ISCALPRD3715223**	11"	22"	511 Lbs
ISCALPRD371525**	14"	25"	528 Lbs	ISCALPRD3715253**	14"	25"	528 Lbs
ISCALPRD371531**	20"	31"	754 Lbs	Meets seismic requirements for the following codes: CBC 2019 IBC 2018			
**Note: Spring configuration must be added to part number at time of order.							



PROFILE DETAIL

** UNITS UNDER 1280 LBS (2) ISOLATOR RESTRAINTS, OVER 1280 LBS (3) ISOLATOR RESTRAINTS



3847 WABASH DRIVE
MIRA LOMA, CA 91725
PHONE (951) 685-1101
FAX (619) 872-9799

SUBMITTED TO: _____
COMPANY: _____
JOB NAME: _____
EQUIPMENT: _____
NOTES: _____

FORM NO:
ISCAL-127

DATE: 11/13/19

PART NUMBER:
ISCALPRD3715 SERIES

REV: 4

DRAWN BY:
ALL