

For wood, concrete and steel attachment see Roof Anchorage Detail, Form No. CB-60.

Welded isolation springs housing are standard. For bolted spring housing, neoprene pads and spring cups see Weldment and Bolting Detail, Form No. CB-61

FEATURES

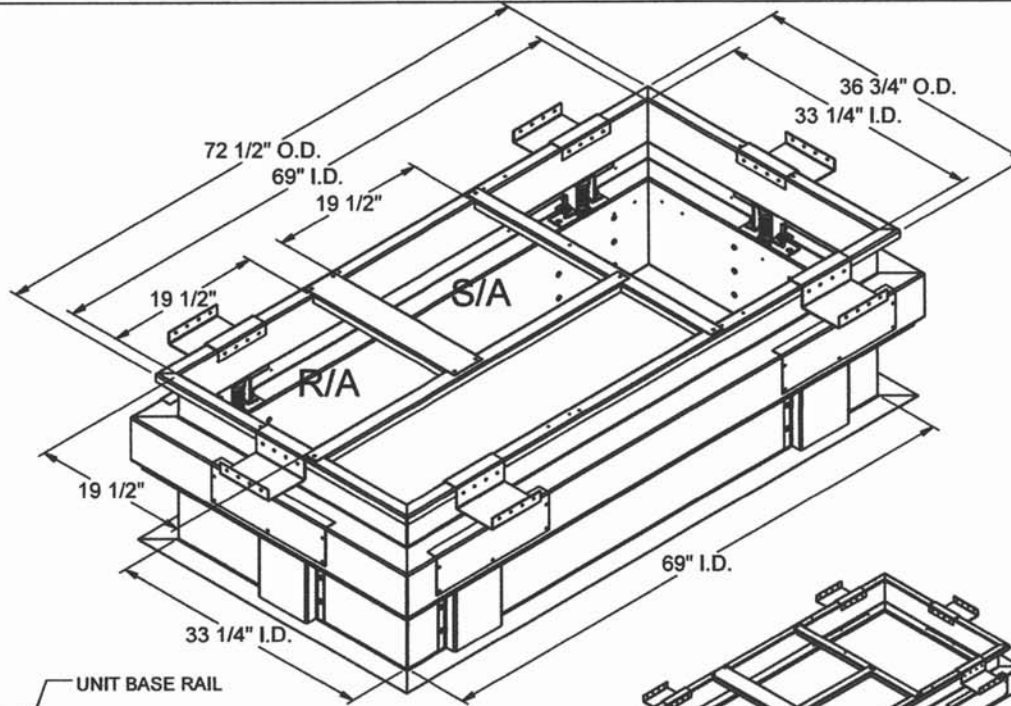
- Roof curbs sides and ends are 16 ga.
- Fully welded construction.
- Gasketing package provided.
- Heat treated wood nailer provided.
- Insulated deck pans provided.
- Pitched curbs and taller curbs are available.

NOTES

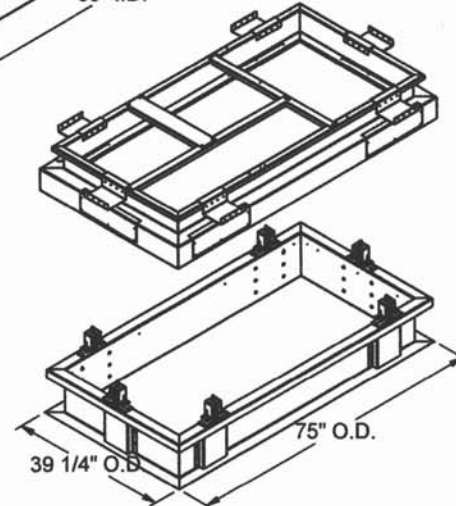
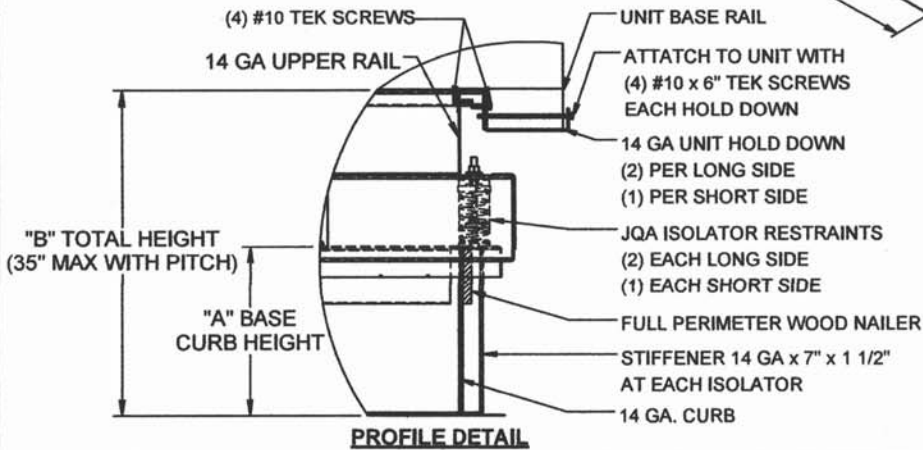
- Attach ductwork to roof curb. Flanges of duct rest on top of the curb, Support ductwork below the curb.
- Thru the curb utilities are available. Contact you York distributor or Provent directly.

STRUCTURALLY CALCULATED VIBRATION ISOLATION ROOF CURBS FOR YORK UNITS

ZR 036-060, XP 036-060, ZF 036-072



PROVENT P/N	A	B	EST. WEIGHT
CBISCSUN367218**	8"	18"	260 Lbs.
CBISCSUN367221**	11"	21"	280 Lbs.
CBISCSUN367224**	14"	24"	300 Lbs.
**Note: Spring configuration must be added to part number at time of order			
Meets seismic requirements for the following codes: CBC 2016 IBC 2015			



3847 WABASH DRIVE
MIRA LOMA, CA 91752
PHONE (951) 685-1101
FAX (619) 872-9799

SUBMITTED TO: _____
COMPANY: _____
JOB NAME: _____
EQUIPMENT: _____
NOTES: _____

FORM NO: CBISC-03
DATE: 9/27/2018

PART NUMBER: -
REV: 1
DRAWN BY: ALL