

For wood, concrete and steel attachments see Roof Anchorage Detail, Form Nos. CB-60.

STRUCTURALLY CALCULATED WELDED ROOF CURBS FOR YORK UNITS

PROVENT P/N	A	EST. WEIGHT
CBWCPRS08	8"	125 Lbs.
CBWCPRS11	11"	136 Lbs.
CBWCPRS14	14	147 Lbs.
CBWCPRS24	24"	186 Lbs.

ZX 04-07
ZY, ZQ, XY 04-06

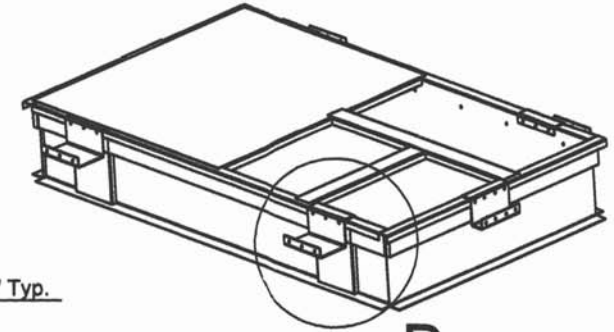
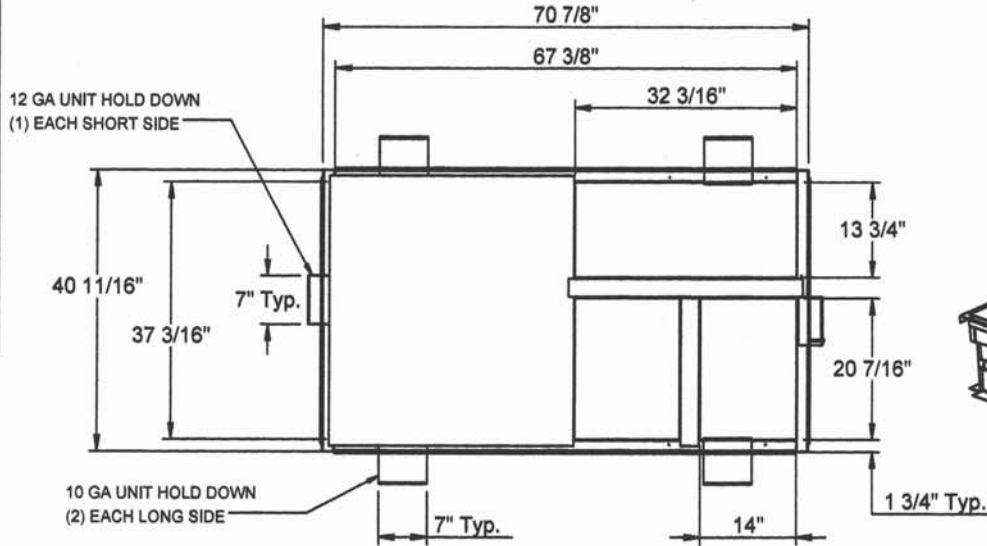
Meets seismic requirements for the following codes:
CBC 2016
IBC 2015

FEATURES

- Roof curb sides and ends are 16 Ga. galvanized steel.
- Gasketing package provided.
- Heat treated wood nailer provided.
- Pitched curbs and taller curbs are available.

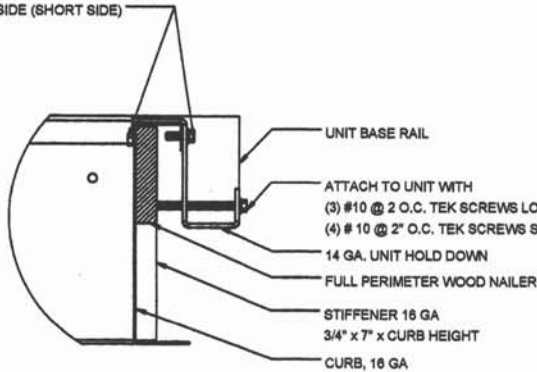
Notes

Attached ductwork to roof curb. Flanges of duct rest on top of curb. Support ductwork below the curb.

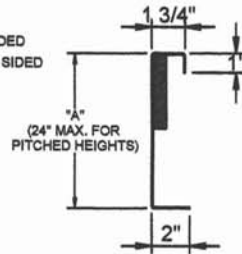


B

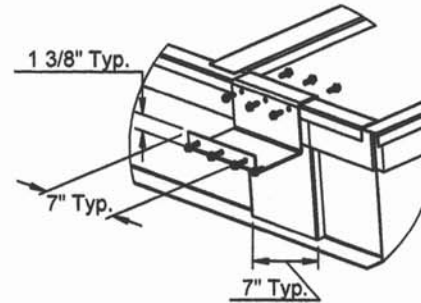
ATTACH TO CURB WITH
 (5) #12X 3/4" @ 3 O.C. TEK SCREW,
 EACH SIDE (LONG SIDE)
 (3) #10X 3/4" @ 3 O.C. TEK SCREW,
 EACH SIDE (SHORT SIDE)



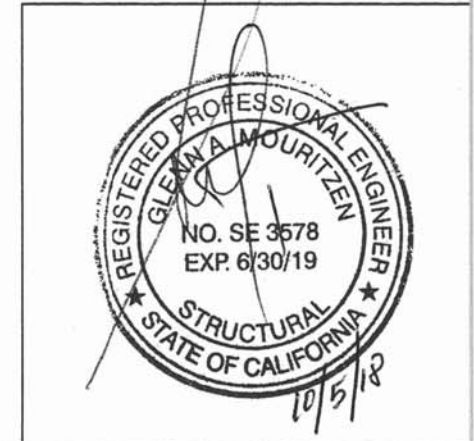
HOLD DOWN DETAIL



CURB DETAIL



DETAIL B



3847 WABASH DRIVE
 MIRA LOMA, CA 91725

PHONE (951) 685-1101
 FAX (619) 872-9799

SUBMITTED TO: _____
 COMPANY: _____
 JOB NAME: _____
 EQUIPMENT: _____
 NOTES: _____

FORM NO:
 CBWC-300

DATE:
 9/27/2018

PART NUMBER:
 CBWCPRS SERIES

REV:
 6

DRAWN BY:
 ALL