

For wood, concrete and steel attachments see Roof Anchorage Detail, Form No. CB-60.

STRUCTURALLY CALCULATED WELDED ROOF CURBS FOR YORK UNITS

**ZT, ZR, ZJ, ZH 037-150
ZF, ZH, ZJ, ZR, XP, DH, DM, DF, DR, BP 078-150**

ProVent P/N	A	WEIGHT
CBWCPRD371508	8"	125 Lbs
CBWCPRD371511	11"	141 Lbs
CBWCPRD371514	14"	157 Lbs
CBWCPRD371524	24"	208 Lbs

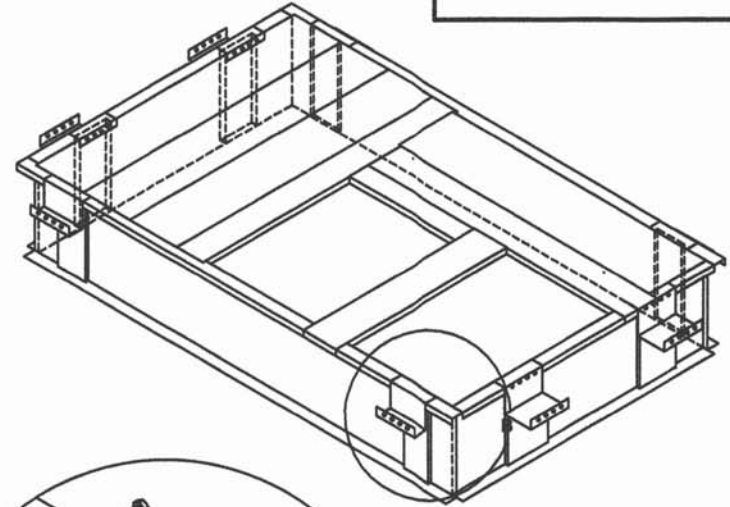
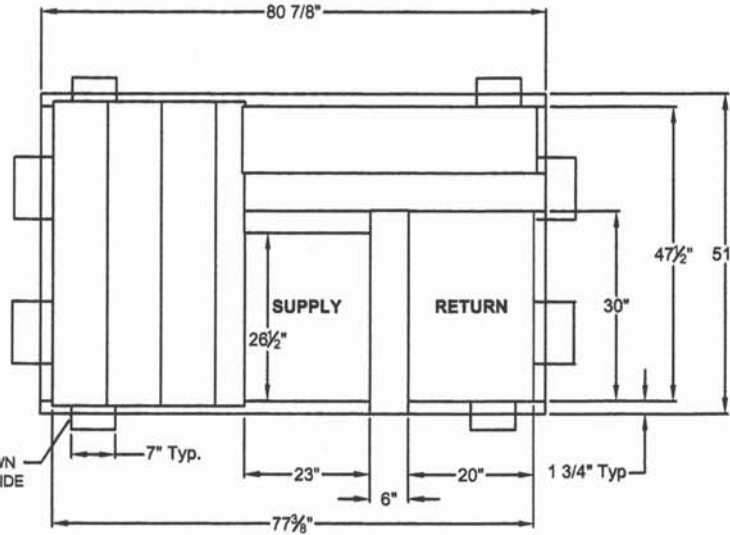
Meets seismic requirements for the following codes:
CBC 2016
IBC 2015

FEATURES

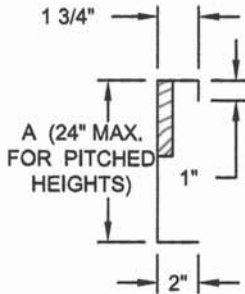
- Roof curb sides and ends are 16 ga. galvanized steel.
- Gasketing package provided.
- Heat treated wood nailer provided.
- Insulated deck pans provided.
- Pitched curbs and taller curbs are available.

NOTES

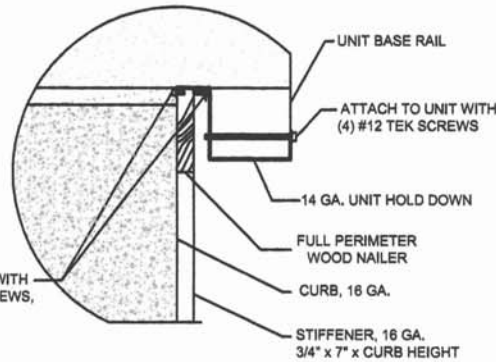
- Attach ductwork to roof curb. Flanges of duct rest on top of curb. Support ductwork below the curb.
- Thru the curbs utilities are available. Contact your York distributor or Provent directly.



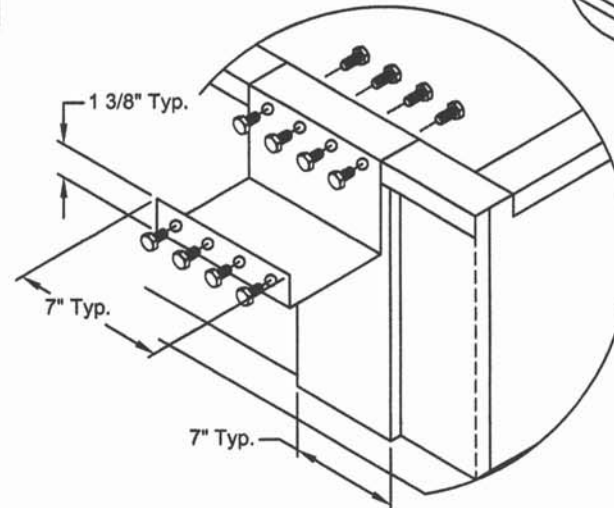
UNIT HOLD DOWN
(2) EACH LONG SIDE



CURB DETAIL



HOLD DOWN DETAIL



DETAIL B



3847 WABASH DRIVE
MIRA LOMA, CA 91725

PHONE (951) 685-1101
FAX (619) 872-9799

SUBMITTED TO: _____
COMPANY: _____
JOB NAME: _____
EQUIPMENT: _____
NOTES: _____

FORM NO:
CBWC-113

DATE:
09/27/18

REV:
5

PART NUMBER:
CBWCPRD3715 SERIES

DRAWN BY:
ALL