

For wood, concrete and steel attachments see Roof Anchorage Detail, Form No. CB-60.

**STRUCTURALLY CALCULATED WELDED ROOF CURBS FOR YORK UNITS**

ProVent P/N	A	WEIGHT
CBWCLXL08	8"	74 Lbs
CBWCLXL11	11"	85 Lbs
CBWCLXL14	14"	97 Lbs
CBWCLXL24	24"	171 Lbs

**P\*\*\*B ALL MODELS**

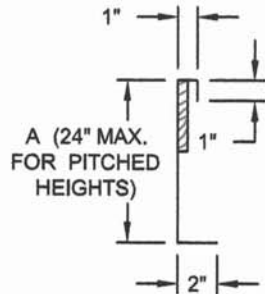
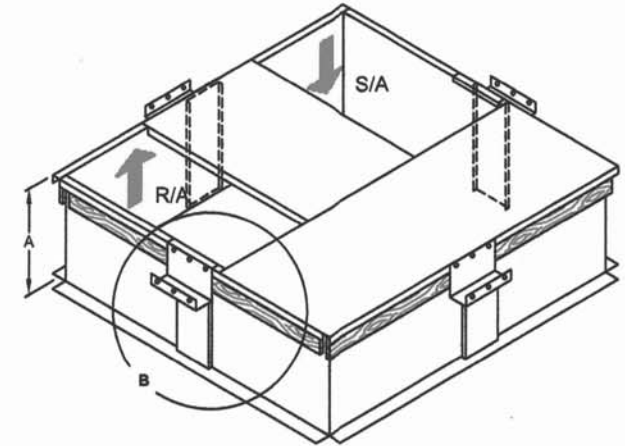
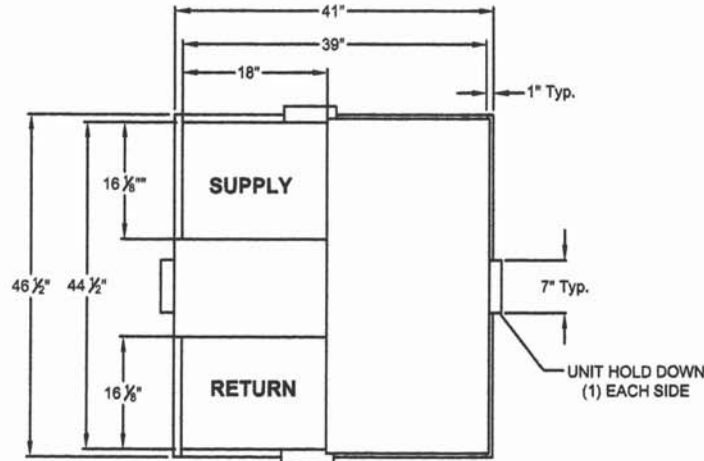
Meets seismic requirements for the following codes:  
 CBC 2016  
 IBC 2015

**FEATURES**

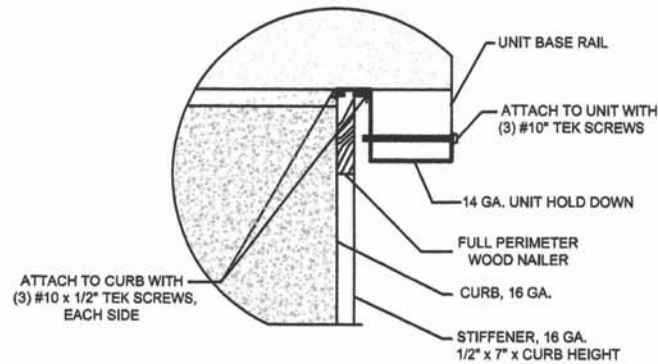
- Roof curb sides and ends are 16 ga. galvanized steel.
- Gasketing package provided.
- Heat treated wood nailer provided.
- Insulated deck pans provided.
- Pitched curbs and taller curbs are available.

**NOTES**

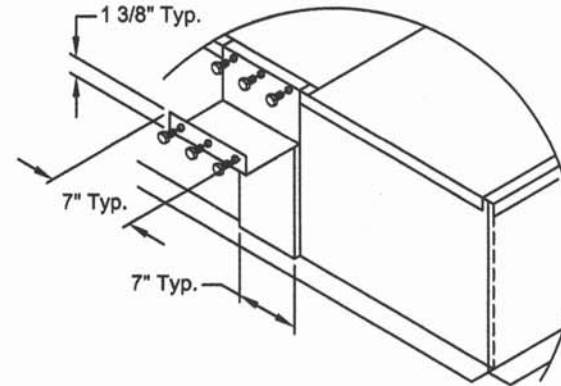
- Attach ductwork to roof curb. Flanges of duct rest on top of curb. Support ductwork below the curb.
- Thru the curbs utilities are available. Contact your York distributor or Provent directly.



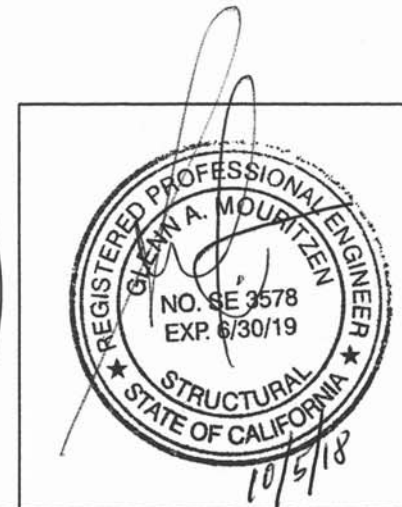
**CURB DETAIL**



**HOLD DOWN DETAIL**



**DETAIL B**



3847 WABASH DRIVE  
 MIRA LOMA, CA 91725

PHONE (951) 685-1101  
 FAX (619) 872-9799

SUBMITTED TO: \_\_\_\_\_  
 COMPANY: \_\_\_\_\_  
 JOB NAME: \_\_\_\_\_  
 EQUIPMENT: \_\_\_\_\_  
 NOTES: \_\_\_\_\_

FORM NO:  
 CBWC-119

DATE:  
 07/31/18

PART NUMBER:  
 CBWCLXL SERIES

REV:  
 4

DRAWN BY:  
 ALL