

For wood, concrete and steel attachments see Roof Anchorage Detail, Form No. CB-60.

FEATURES

- Roof curb sides and ends are 16 ga. galvanized steel.
- Gasketing package provided.
- Heat treated wood nailer provided.
- Insulated deck pans provided.
- Pitched curbs and taller curbs are available.

NOTES

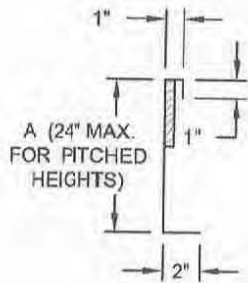
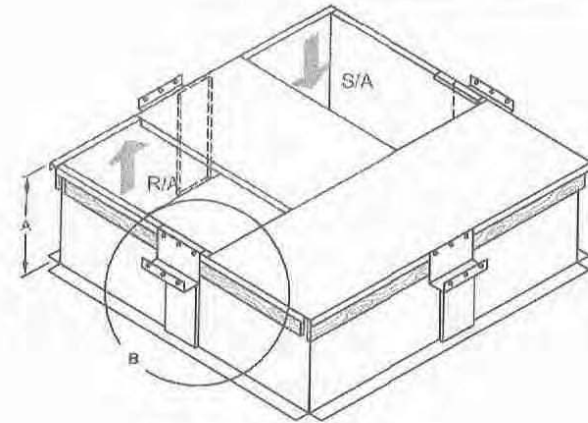
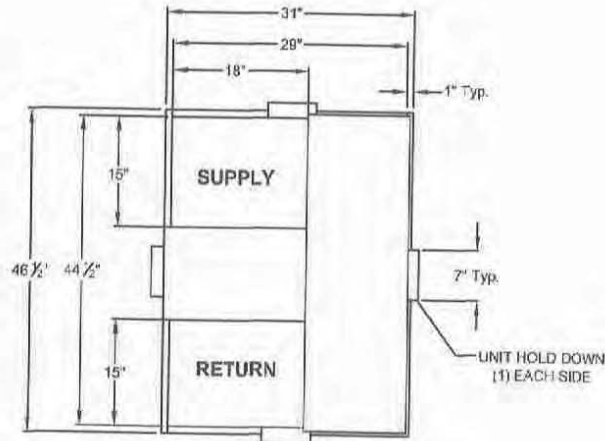
- Attach ductwork to roof curb. Flanges of duct rest on top of curb. Support ductwork below the curb.
- Thru the curbs utilities are available. Contact your York distributor or Provent directly.

STRUCTURALLY CALCULATED WELDED ROOF CURBS FOR YORK UNITS

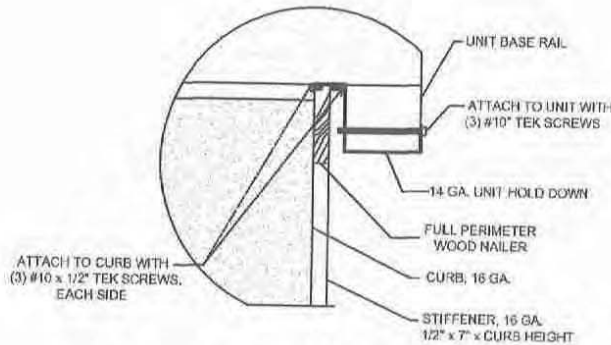
P*A ALL MODELS**

ProVent P/N	A	WEIGHT
CBWCLXS08	8"	64 Lbs
CBWCLXS11	11"	75 Lbs
CBWCLXS14	14"	87 Lbs
CBWCLXS24	24"	161 Lbs

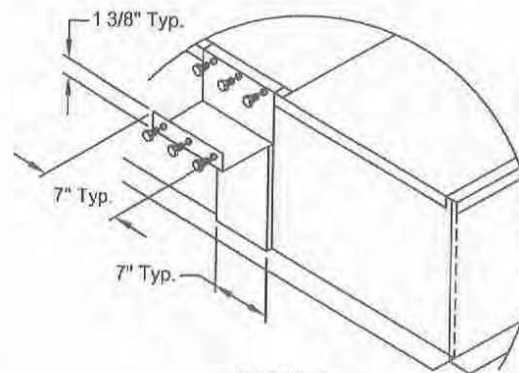
Meets seismic requirements for the following codes:
 CBC 2016
 IBC 2015



CURB DETAIL



HOLD DOWN DETAIL



DETAIL B



3847 WABASH DRIVE
 MIRA LOMA, CA 91725

PHONE (951) 685-1101
 FAX (619) 872-9799

SUBMITTED TO: _____
 COMPANY: _____
 JOB NAME: _____
 EQUIPMENT: _____
 NOTES: _____

FORM NO:
 CBWC-118

DATE:
 07/31/18

REV:
 5

PART NUMBER:
 CBWCLXS SERIES

DRAWN BY:
 ALL