

For wood, concrete and steel attachments see Roof Anchorage Detail, Form No. CB-60.

**FEATURES**

- Roof curb sides and ends are 16 ga. galvanized steel.
- Gasketing package provided.
- Heat treated wood nailer provided.
- Insulated deck pans provided.
- Pitched curbs and taller curbs are available.

**NOTES**

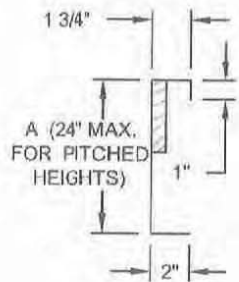
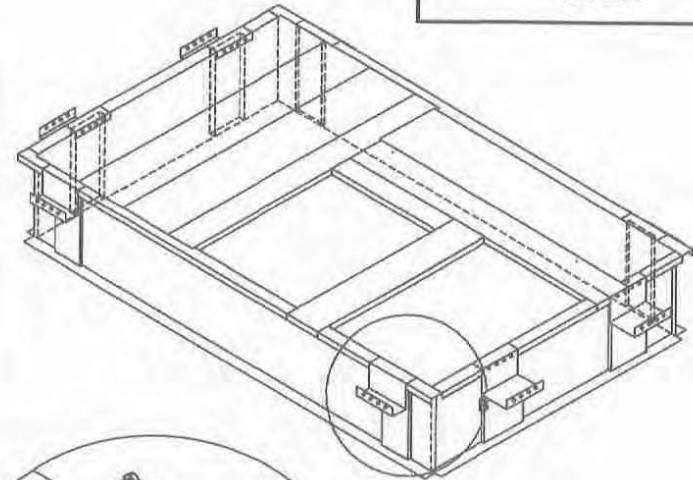
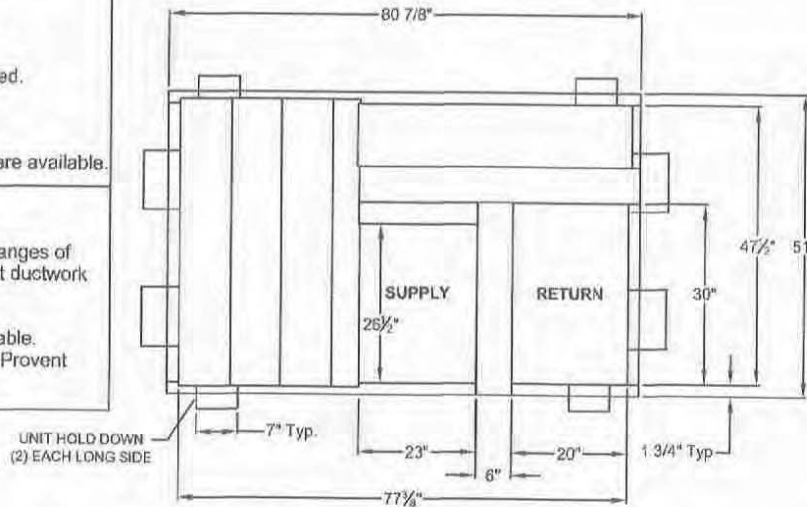
- Attach ductwork to roof curb. Flanges of duct rest on top of curb. Support ductwork below the curb.
- Thru the curbs utilities are available. Contact your York distributor or Provent directly.

**STRUCTURALLY CALCULATED WELDED ROOF CURBS FOR YORK UNITS**

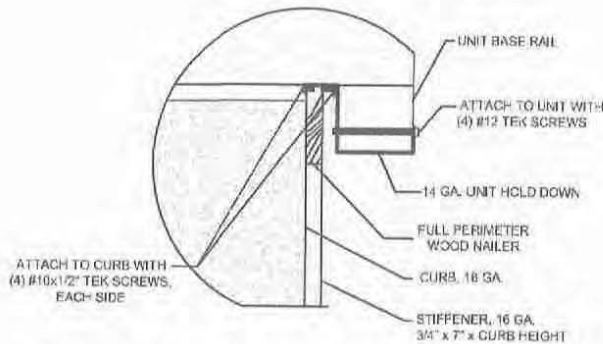
ZT, ZR, ZJ, ZH 037-150  
ZF, ZH, ZJ, ZR, XP, DH, DM, DF, DR, BP 078-150

ProVent P/N	A	WEIGHT
CBWCPRD371508	8"	125 Lbs
CBWCPRD371511	11"	141 Lbs
CBWCPRD371514	14"	157 Lbs
CBWCPRD371524	24"	208 Lbs

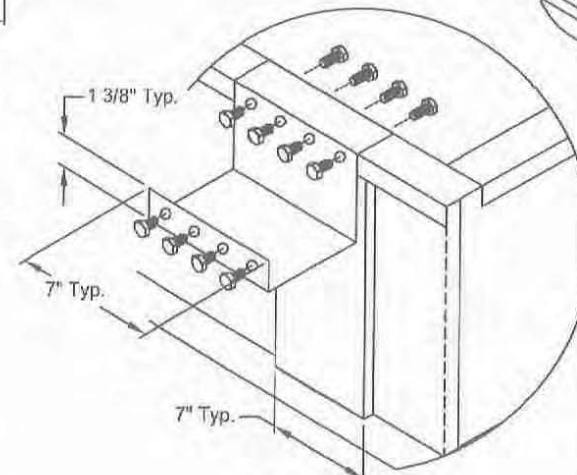
Meets seismic requirements for the following codes:  
CBC 2016  
IBC 2015



**CURB DETAIL**



**HOLD DOWN DETAIL**



**DETAIL B**



3847 WABASH DRIVE  
MIRA LOMA, CA 91725

PHONE (951) 685-1101  
FAX (619) 872-9799

SUBMITTED TO: \_\_\_\_\_  
COMPANY: \_\_\_\_\_  
JOB NAME: \_\_\_\_\_  
EQUIPMENT: \_\_\_\_\_  
NOTES: \_\_\_\_\_

FORM NO:  
CBWC-113

DATE:  
09/27/18

REV:  
5

PART NUMBER:  
CBWCPRD3715 SERIES

DRAWN BY:  
ALL