

For wood, concrete and steel attachments see Roof Anchorage Detail, Form No. CB-60.

**STRUCTURALLY CALCULATED WELDED ROOF CURBS FOR YORK UNITS**

ZR, XN, XP 036-060;  
ZE, ZF 036-072

ProVent P/N	A	WEIGHT
CBWCSUN367208	8"	80 Lbs
CBWCSUN367211	11"	95 Lbs
CBWCSUN367214	14"	109 Lbs
CBWCSUN367224	24"	189 Lbs

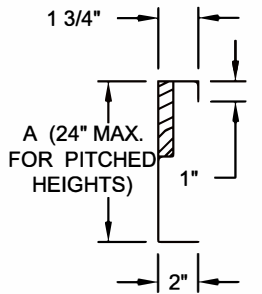
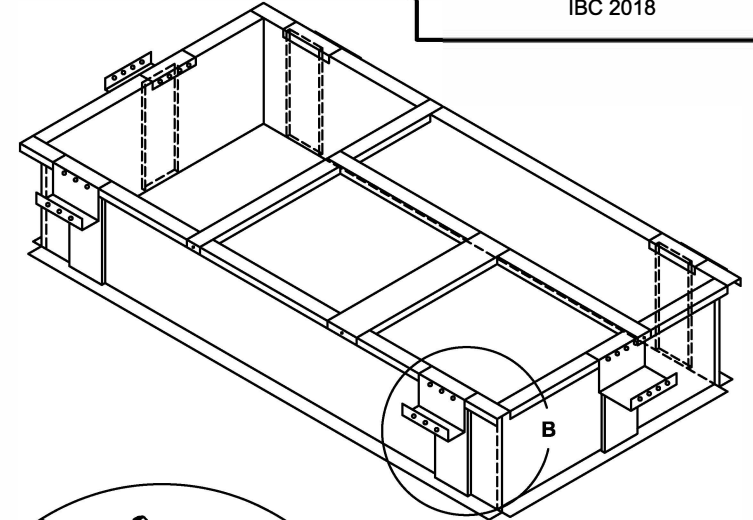
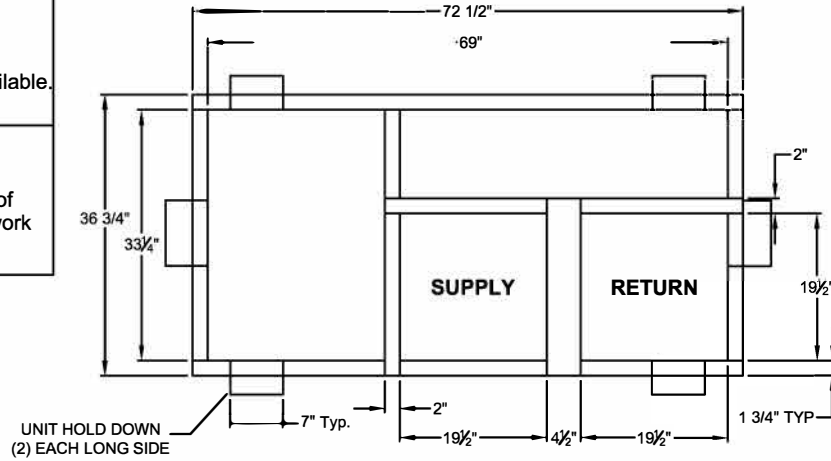
Meets seismic requirements for the following codes:  
CBC 2019  
IBC 2018

**FEATURES**

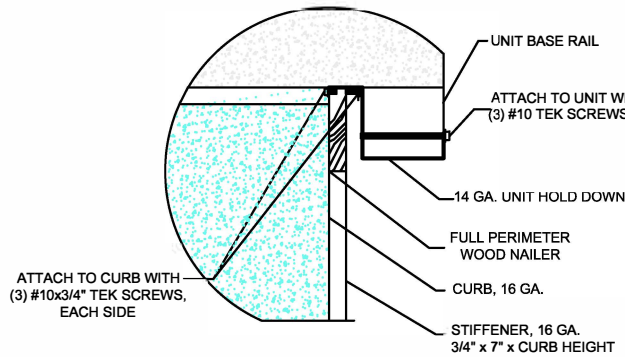
- Roof curb sides and ends are 16 ga. galvanized steel.
- Gasketing package provided.
- Heat treated wood nailer provided.
- Pitched curbs and taller curbs are available.

**NOTES**

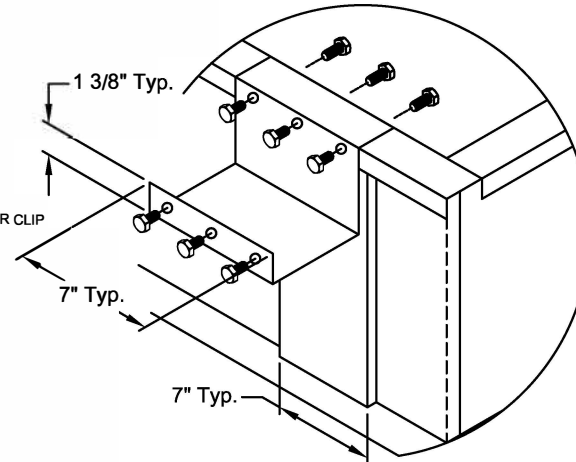
- Attach ductwork to roof curb. Flanges of duct rest on top of curb. Support ductwork below the curb.



**CURB DETAIL**



**HOLD DOWN DETAIL**



**DETAIL B**



3847 WABASH DRIVE  
MIRA LOMA, CA 91725  
PHONE (951) 685-1101  
FAX (619) 872-9799

SUBMITTED TO: \_\_\_\_\_  
COMPANY: \_\_\_\_\_  
JOB NAME: \_\_\_\_\_  
EQUIPMENT: \_\_\_\_\_  
NOTES: \_\_\_\_\_

FORM NO:  
CBWC-112

DATE:  
9/9/2021

PART NUMBER:  
CBWCSUN3672 SERIES

REV:  
8

DRAWN BY:  
ALL