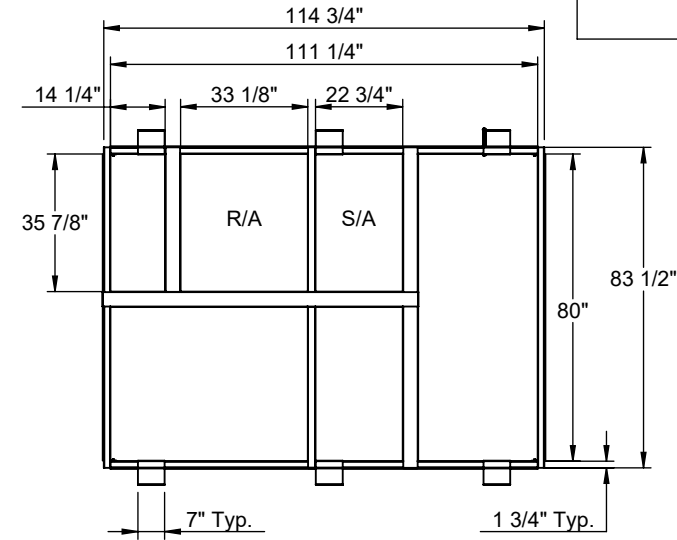
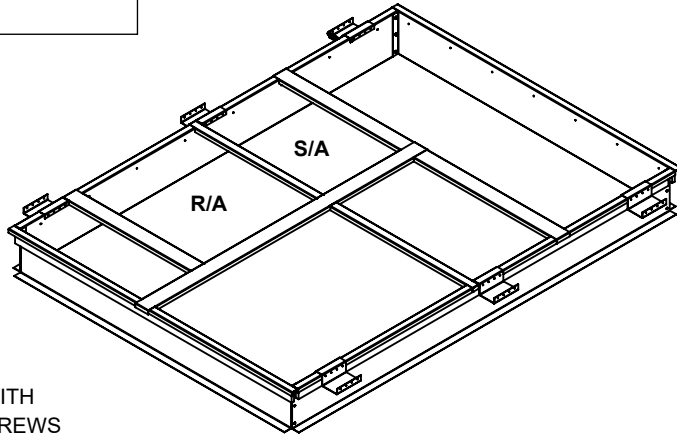
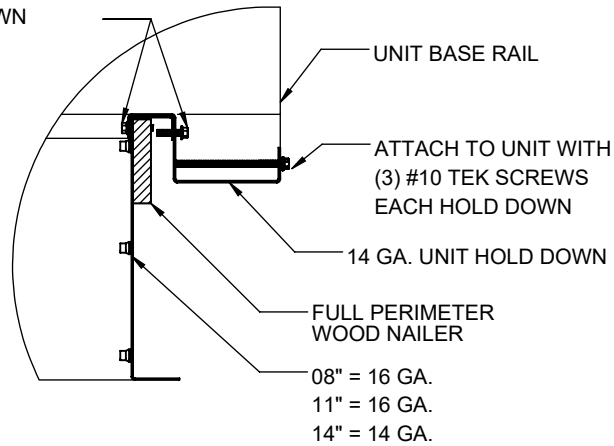


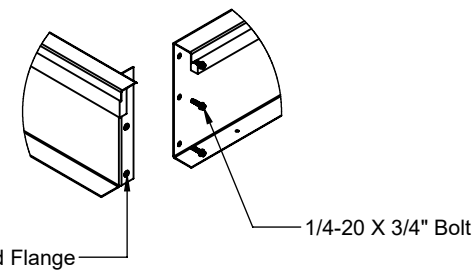
For wood, concrete and steel attachments see Roof Anchorage Detail, Form Nos. CB-60.	STRUCTURALLY CALCULATED KNOCK-DOWN ROOF CURBS FOR YORK UNITS	PROVENT P/N CBKDSL18008	A 8"	EST. WEIGHT 115 Lbs.	SEISMIC KIT P/N KDKITSLU180
		CBKDSL18011	11"	129 Lbs.	
Will conform to seismic code requirements for knock-down or pre-assembled application. (Contact factory for assembled version.)	ZF 180	CBKDSL18014	14"	144 Lbs.	Meets seismic requirements for the following codes: CBC 2019 IBC 2018



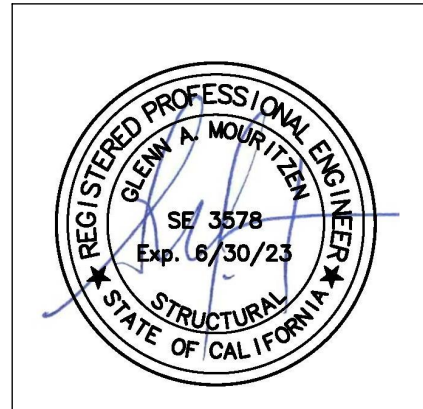
ATTACH TO CURB WITH (3) #10 x 3/4" TEK SCREWS EACH HOLD DOWN



HOLD DOWN DETAIL



CROSS SECTION DETAIL



3847 WABASH DRIVE
MIRA LOMA, CA 91725
PHONE (951) 685-1101
FAX (619) 872-9799

SUBMITTED TO: _____
 COMPANY: _____
 JOB NAME: _____
 EQUIPMENT: _____
 NOTES: _____

FORM NO:
 CBKD-135
DATE:
 9/9/2021

PART NUMBER:
 KDKITSLU180
REV:
 1
DRAWN BY:
 ALL