

For wood, concrete and steel attachments see Roof Anchorage Detail, Form No. CB-24A.

Will conform to seismic code requirements for knock-down or pre-assembled application. (Contact factory for assembled version.)

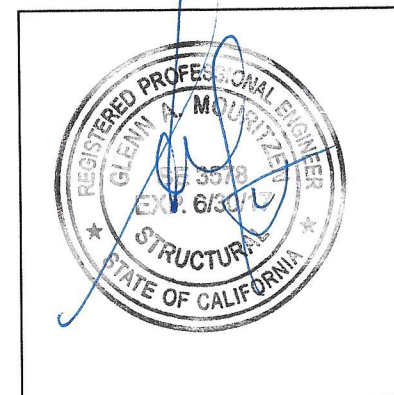
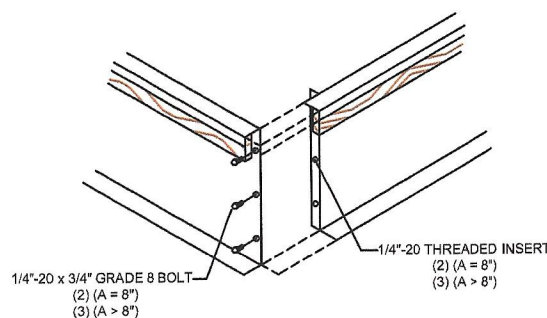
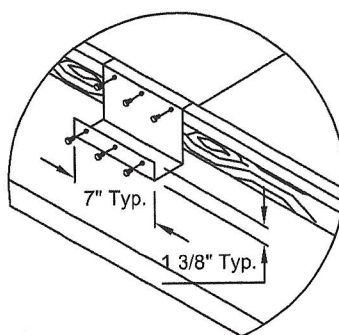
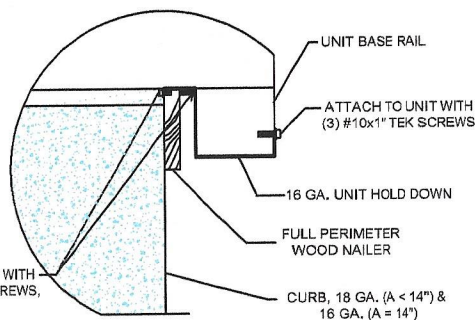
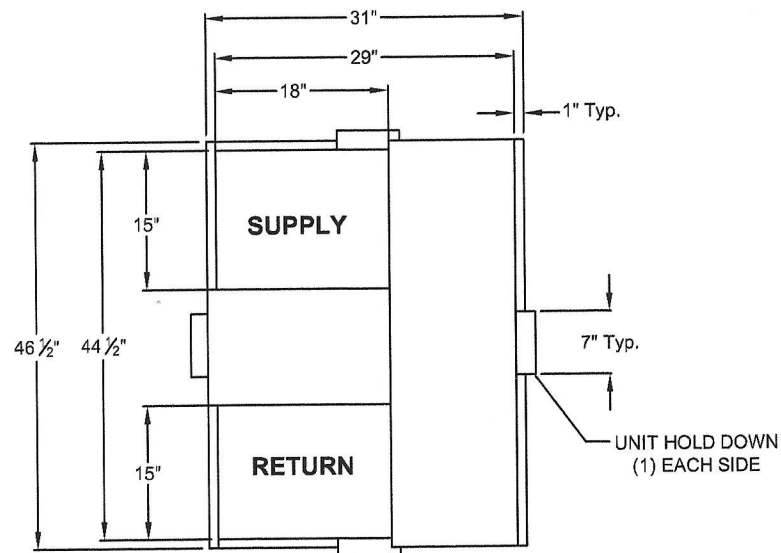
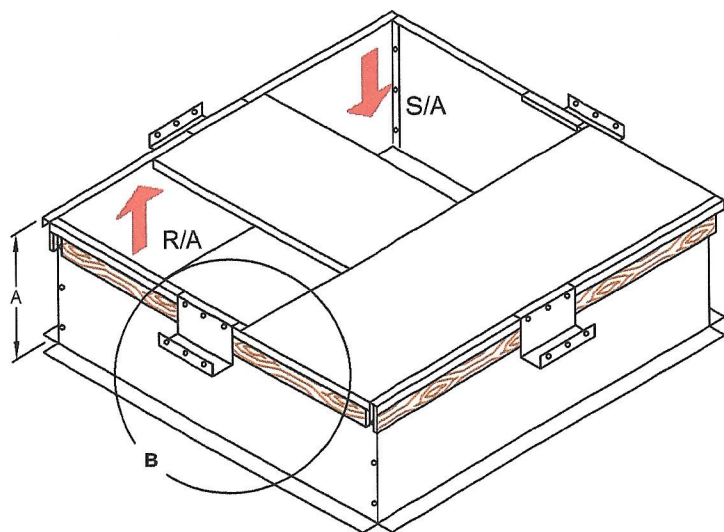
STRUCTURALLY CALCULATED KNOCK-DOWN ROOF CURBS FOR YORK UNITS

PCG4A, PCE4A 024-042 / PHE4A, PHG4A 024-030

ProVent P/N	A	WEIGHT
CBKDLXS08	8"	43 Lbs
CBKDLXS11	11"	54 Lbs
CBKDLXS14	14"	65 Lbs

SEISMIC KIT P/N	WEIGHT
KDKITLX	5 Lbs

Meets seismic requirements for the following codes:
 CBC 2013
 IBC 2012



3847 WABASH DR.
 MIRA LOMA, CA 91725

PHONE (951) 685-1101
 FAX (619) 872-9799

SUBMITTED TO: _____
 COMPANY: _____
 JOB NAME: _____
 EQUIPMENT: _____
 NOTES: _____

FORM NO:
 CBKD-152

DATE:
 09/21/15

PART NUMBER:
 KDKITLX

REV:
 2
 DRAWN BY:
 CNG