

For wood, concrete and steel attachments see Roof Anchorage Detail, Form Nos. CB-60.

## STRUCTURALLY CALCULATED KNOCK-DOWN ROOF CURBS FOR YORK UNITS

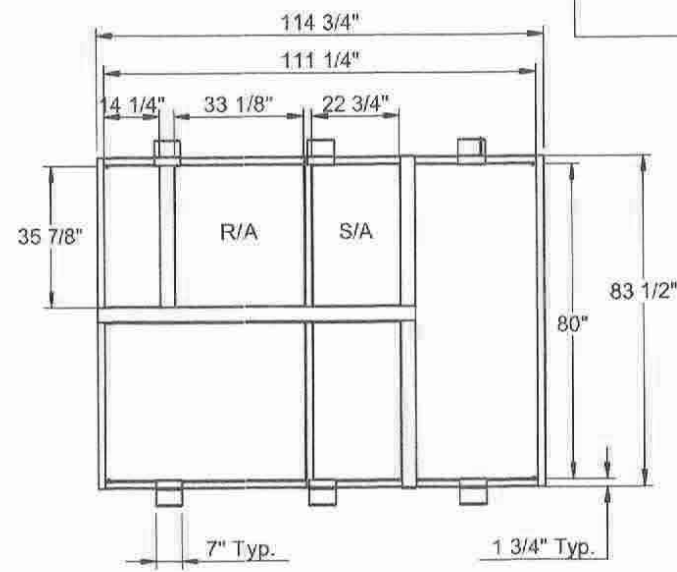
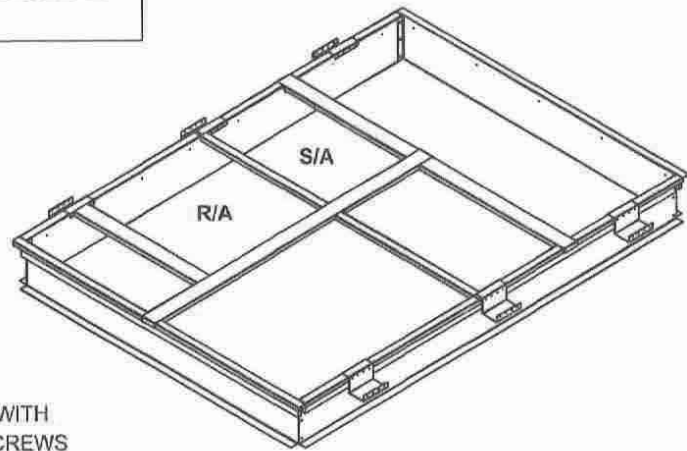
ZF 180

PROVENT P/N	A	EST. WEIGHT
CBKDSL18008	8"	115 Lbs.
CBKDSL18011	11"	129 Lbs.
CBKDSL18014	14"	144 Lbs.

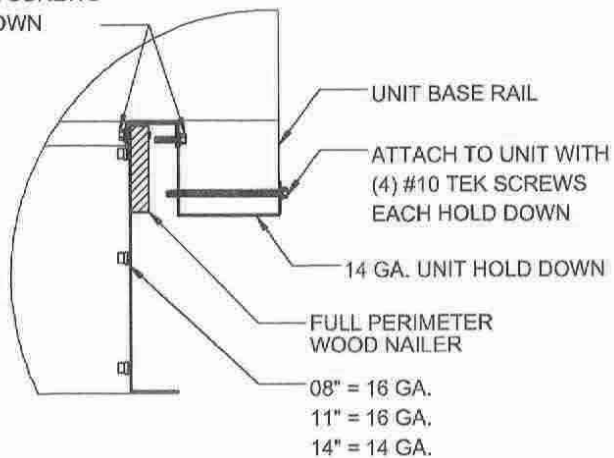
SEISMIC KIT P/N  
KDKITSLU180

Meets seismic requirements for the following codes:  
CBC 2016  
IBC 2015

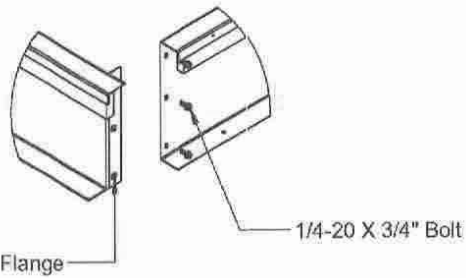
Will conform to seismic code requirements for knock-down or pre-assembled application. (Contact factory for assembled version.)



ATTACH TO UNIT WITH (4) #10 x 6" TEK SCREWS EACH HOLD DOWN



**HOLD DOWN DETAIL**



**CROSS SECTION DETAIL**



3847 WABASH DRIVE  
MIRA LOMA, CA 91725  
PHONE (951) 685-1101  
FAX (619) 872-9799

SUBMITTED TO: \_\_\_\_\_  
COMPANY: \_\_\_\_\_  
JOB NAME: \_\_\_\_\_  
EQUIPMENT: \_\_\_\_\_  
NOTES: \_\_\_\_\_

FORM NO: CBKD-135	PART NUMBER: KDKITSLU180
DATE: 1/7/2019	REV: 1
	DRAWN BY: ALL