

**FEATURES**

- Roof curb perimeter made of 16 ga. galvanized steel.
- Gasketing package provided.
- Heat treater wood nailer provided.
- Corner flanges are pre-threaded for easy bolt on assembly.
- Pitched, adjustable pitch/adjustable height, welded, different height, isolation and calculated curbs are available.

**NOTES**

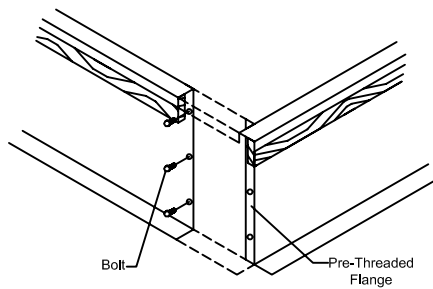
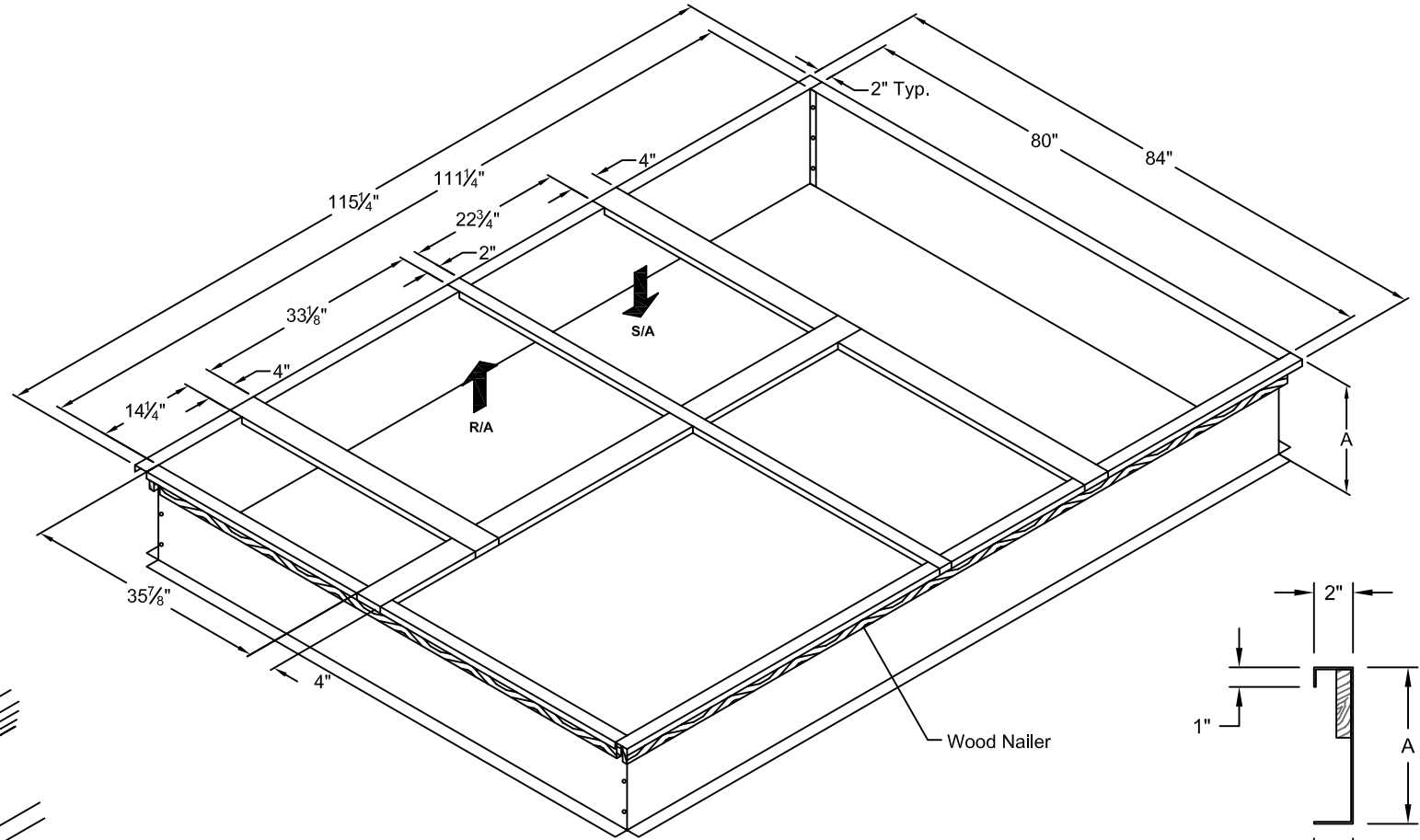
- Attach ductwork to roof curb. Flanges of duct rest on top of curb. Support ductwork below the curb.

**KNOCK-DOWN ROOF CURBS FOR YORK UNITS**

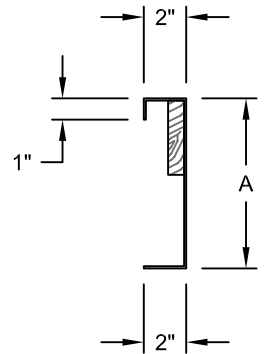
**ZF/DH/DM/BP 180**

| ProVent P/N  | A   | WEIGHT  |
|--------------|-----|---------|
| CBKDSLU18008 | 8"  | 126 Lbs |
| CBKDSLU18011 | 11" | 154 Lbs |
| CBKDSLU18014 | 14" | 175 Lbs |
| CBKDSLU18024 | 24" | 247 Lbs |

|              |     |         |
|--------------|-----|---------|
| CBKDSLU18008 | 8"  | 126 Lbs |
| CBKDSLU18011 | 11" | 154 Lbs |
| CBKDSLU18014 | 14" | 175 Lbs |
| CBKDSLU18024 | 24" | 247 Lbs |



**CORNER DETAIL**



**CROSS SECTION DETAIL**



1392 E. PALOMAR ST., # 403-234  
 CHULA VISTA, CA 91913  
 PHONE (619) 498-9246  
 FAX (619) 498-9247

SUBMITTED TO: \_\_\_\_\_  
 COMPANY: \_\_\_\_\_  
 JOB NAME: \_\_\_\_\_  
 EQUIPMENT: \_\_\_\_\_  
 NOTES: \_\_\_\_\_

FORM NO:  
 CBKD-104  
 DATE:  
 10/17/08

PART NUMBER:  
 CBKDSLU180 SERIES  
 DRAWN BY:  
 FMM