

FEATURES

- Roof curb perimeter made of 16 ga. galvanized steel.
- Gasketing package provided.
- Heat treated wood nailer provided.
- Corner flanges are pre-threaded for easy bolt on assembly.
- Insulated deck pans provided.
- Pitched, adjustable pitch/adjustable height, welded, different height, isolation and calculated curbs are available.

NOTES

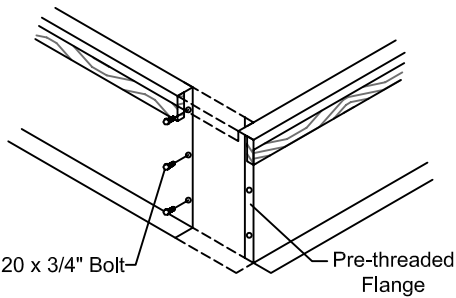
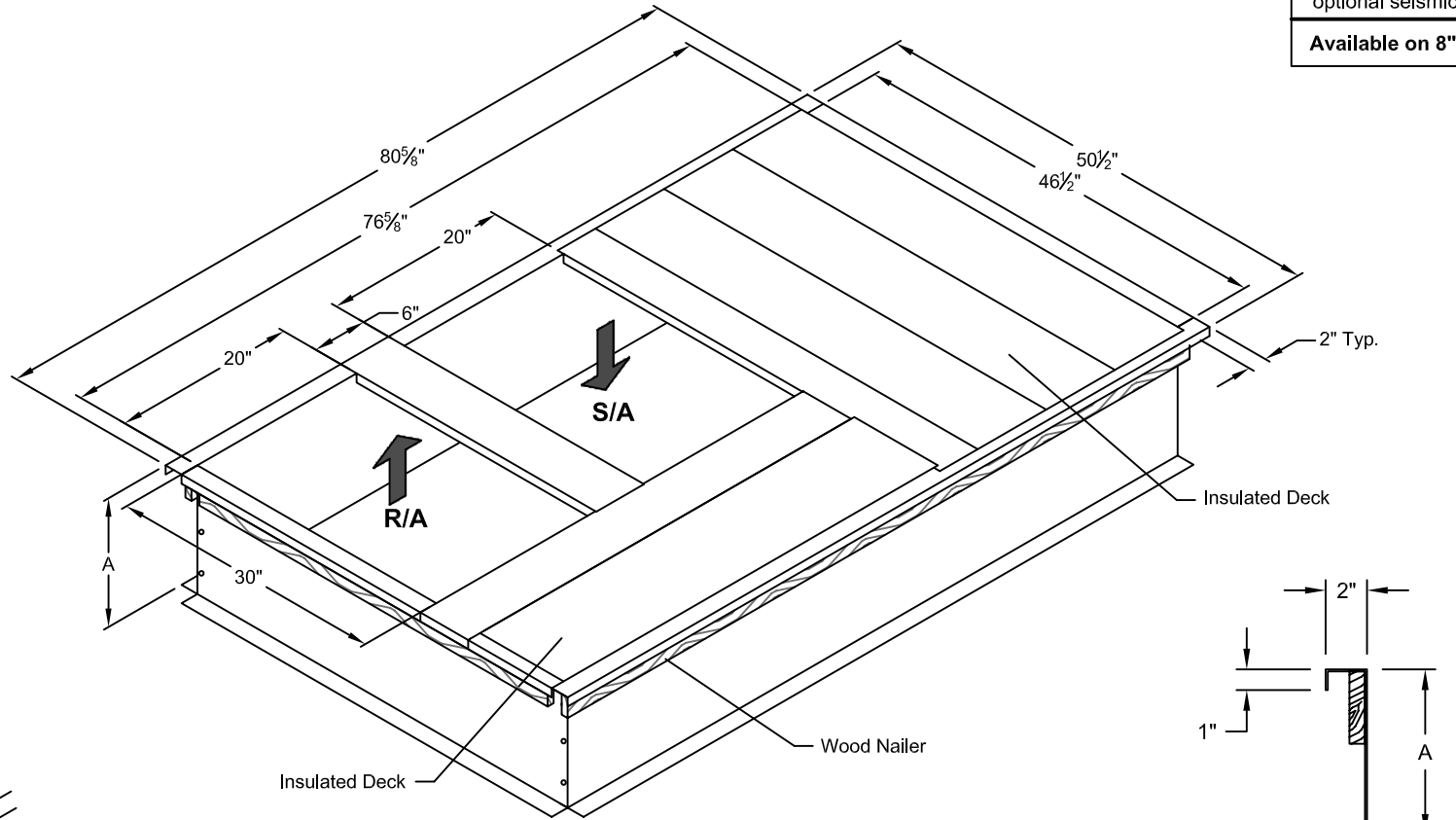
- Attach ductwork to roof curb. Flanges of duct rest on top of curb. Support ductwork below the curb.
- Thru the curbs utilities are available. Contact your York distributor or Provent directly.

KNOCK-DOWN ROOF CURBS FOR YORK UNITS

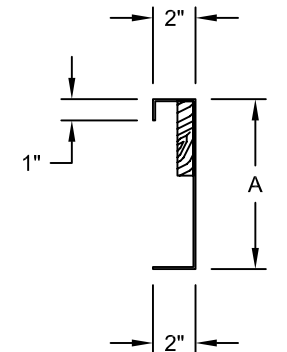
ZH/ZR/XP/DH/DM/DF/DR/BP 078-150: DJ 150

ProVent P/N	A	WEIGHT	SEISMIC KIT P/N
CBKDPRD781508	8"	115 Lbs	KDKITPRD7815
CBKDPRD781511	11"	129 Lbs	
CBKDPRD781514	14"	144 Lbs	
CBKDPRD781524	24"	192 Lbs	

When conforming to CBC 2007 and IBC 2006, include optional seismic kit.
Available on 8" - 14".



CORNER DETAIL



CROSS SECTION DETAIL



1392 E. PALOMAR ST., # 403-234
CHULA VISTA, CA 91913
PHONE (619) 498-9246
FAX (619) 498-9247

SUBMITTED TO: _____
COMPANY: _____
JOB NAME: _____
EQUIPMENT: _____
NOTES: _____

FORM NO:
CBKD-103

PART NUMBER:
CBKDPRD7815 SERIES

DATE:
08/05/09

REV:
2

DRAWN BY:
FMM