

**FEATURES**

- Roof curb sides and ends are 16 ga. galvanized steel.
- Fully welded construction.
- Gasketing package provided.
- Heat treated wood nailer provided.
- Pitched, different height, taller and calculated curbs are available.
- Restraints and springs have OSHPD Pre-Approval, OPA #0070.

**NOTES**

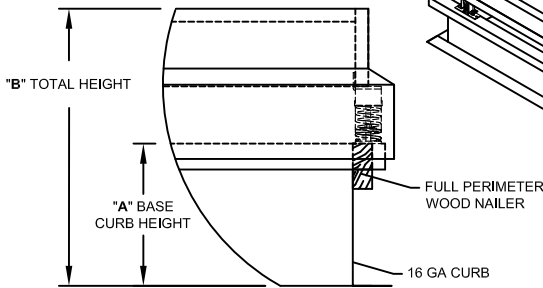
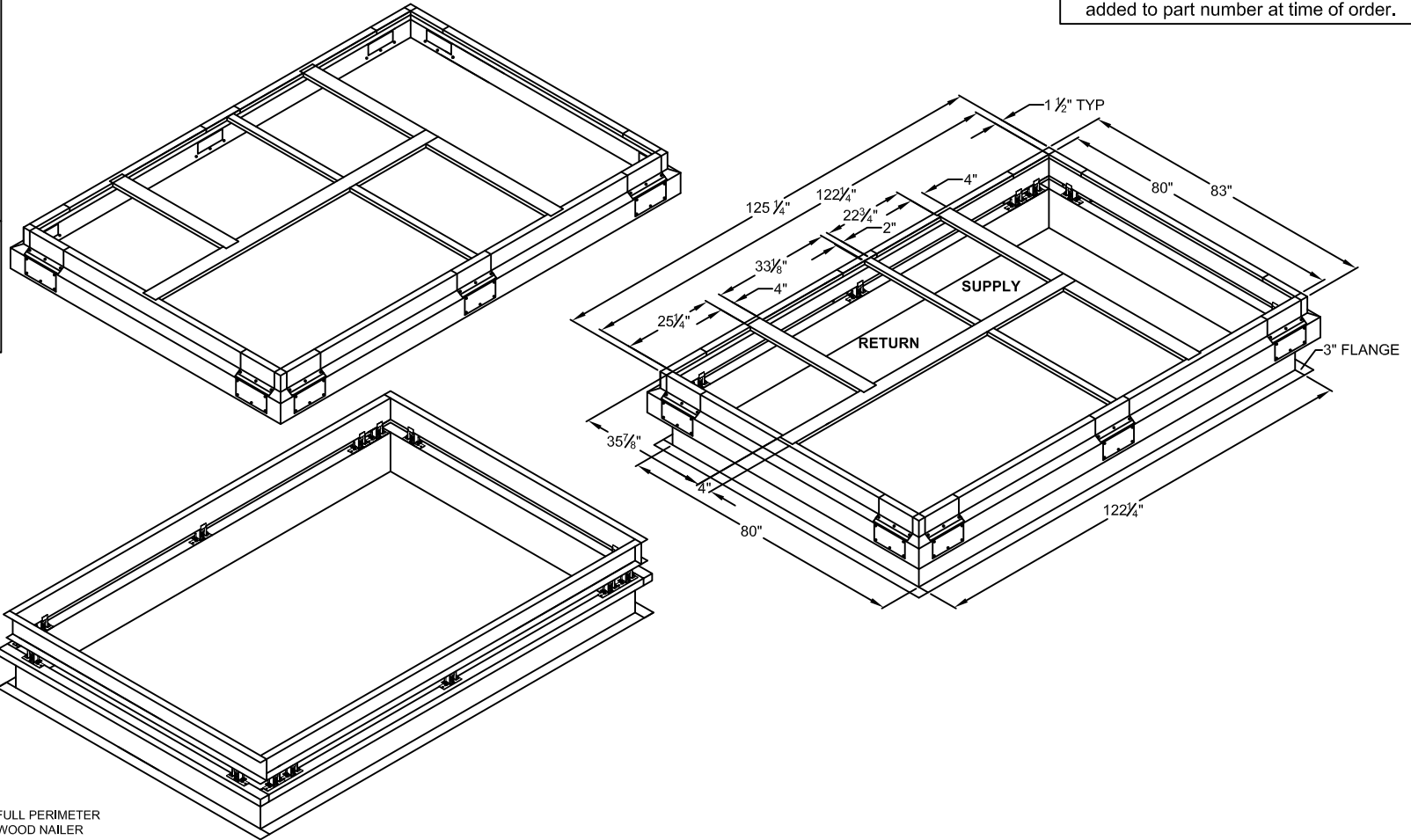
- Attach ductwork to roof curb. Flanges of duct rest on top of curb. Support ductwork below the curb.

**VIBRATION ISOLATION CURBS FOR YORK UNITS**

**ZJ/ZR 180-300: ZF 210-300: XP 180-240**

ProVent P/N (2" Deflection)	A	B	WEIGHT	ProVent P/N (3" Deflection)	A	B	WEIGHT
CBISSLM183019**	8"	19"	517 Lbs	CBISSLM1830193**	8"	19"	517 Lbs
CBISSLM183022**	11"	22"	541 Lbs	CBISSLM1830223**	11"	22"	541 Lbs
CBISSLM183025**	14"	25"	565 Lbs	CBISSLM1830253**	14"	25"	565 Lbs

**\*\* Note:** Spring configuration must be added to part number at time of order.



**PROFILE DETAIL**



3847 WABASH DR.  
MIRA LOMA, CA 91725  
PHONE (651) 685-1101  
FAX (619) 872-9799

SUBMITTED TO: \_\_\_\_\_  
 COMPANY: \_\_\_\_\_  
 JOB NAME: \_\_\_\_\_  
 EQUIPMENT: \_\_\_\_\_  
 NOTES: \_\_\_\_\_

FORM NO:  
CBIS-105  
 DATE:  
11/21/13

PART NUMBER:  
CBISSLM1830 SERIES  
 REV:  
3  
 DRAWN BY:  
CNG