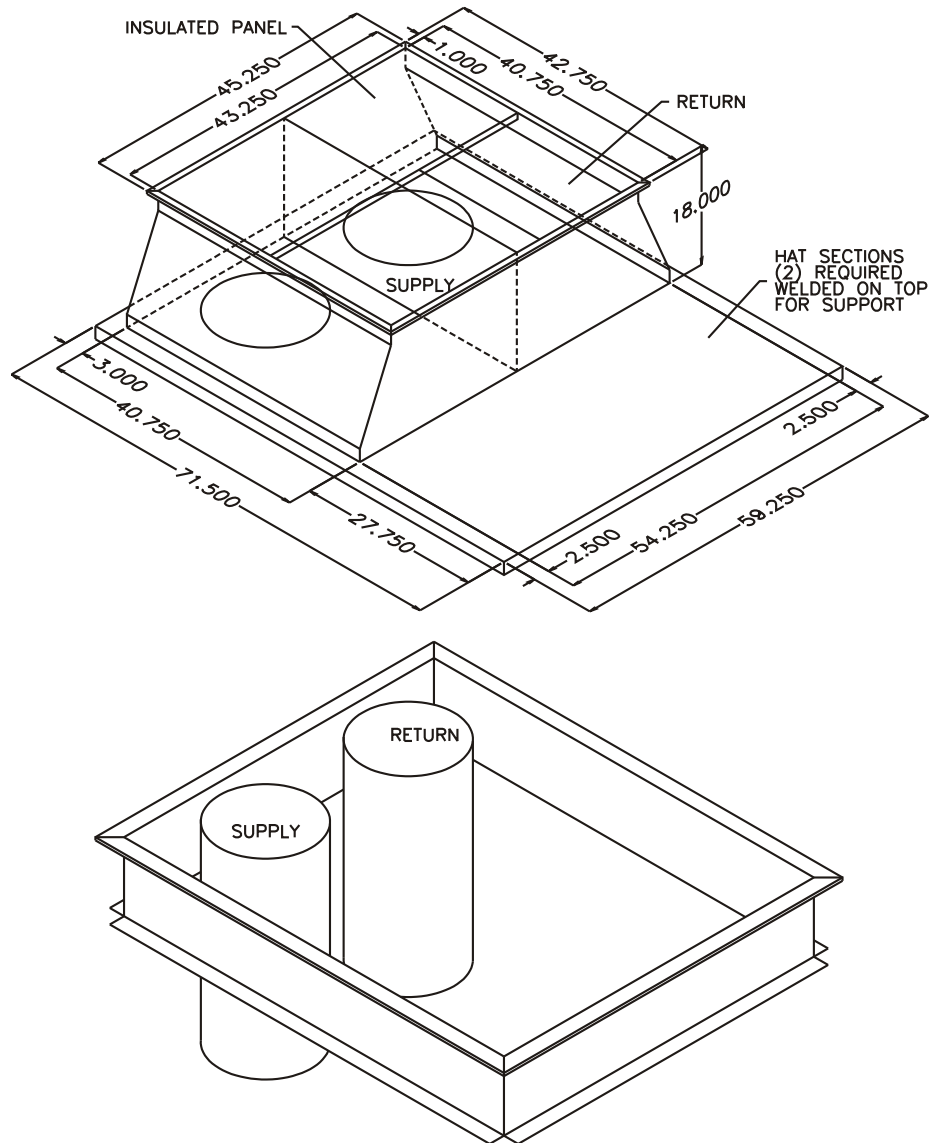




**CURB ADAPTOR FOR YORK INTERNATIONAL
 OLD UNIT: EC 018-048 - MICR.M 16" RND
 NEW UNIT: D*NA/NH 018-060**

Notes:

1. Fully welded G90 galvanized construction.
2. Fully insulated.
3. Gaskets shipped with adaptor.
4. Separate supply and return ducts only.
(No concentrics - Consult factory.)
5. Adaptor matches existing duct.
6. Existing curb O.D. Is 1 inch less than bottom skirt of adapter.



RRS ADAPTOR MODEL	DUCT TYPE	EXISTING CURB DIMENSIONS	HEIGHT
80-290-2405PV	NON-CONCENTRIC	70.50 x 58.25	18"

FOR LIST PRICES: FORM#

JUNE 3, 2011 FORM# 290-2405P

