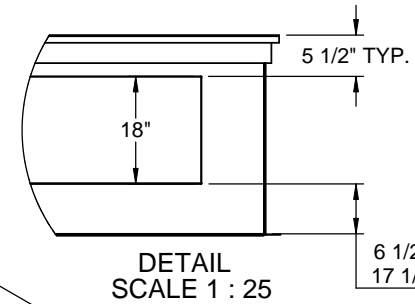
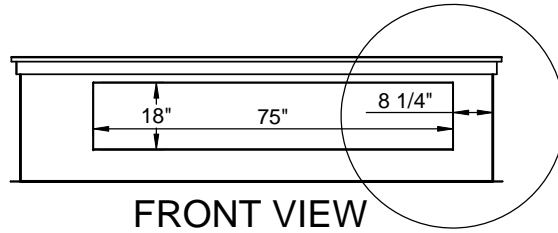


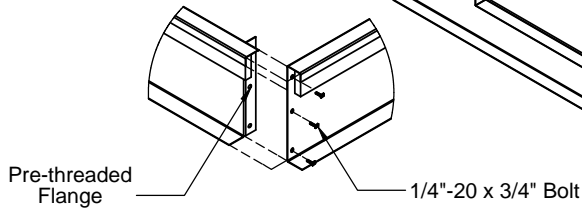
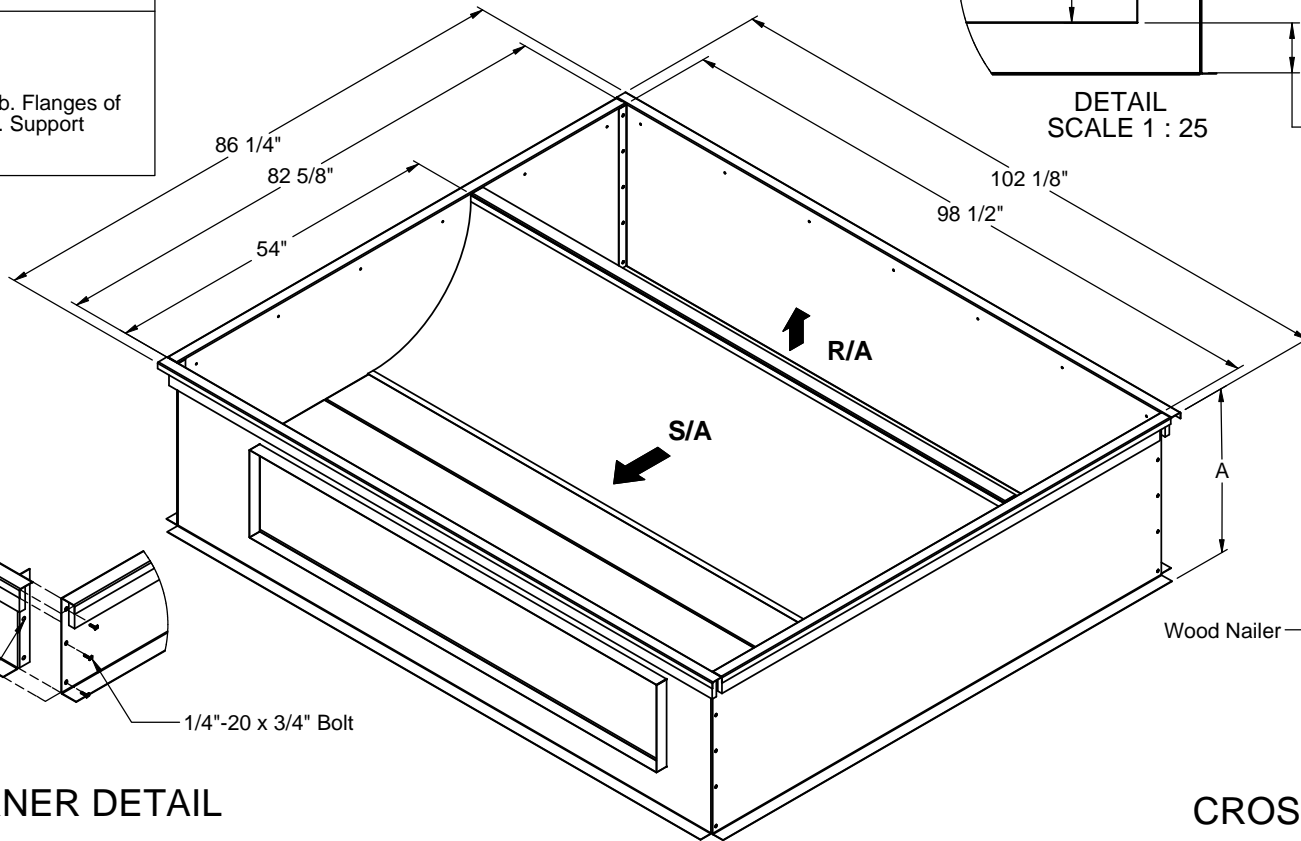
FEATURES	KNOCK-DOWN ROOF CURBS FOR HORIZONTAL ALLIED UNITS	PROVENT P/N	A	APPLICATION	EST. WEIGHT	
		LGH 300H-360H; LCH 242H-360H				
		CBKDHDBX30	30"	SLAB MOUNT	441 Lbs	
	CBKDHDBX41	41"	ROOF MOUNT	529 Lbs		

- Roof curb perimeter made of 14 ga. galvanized steel.
- Gasketing package provided.
- Heat treated wood nailer provided.
- Corner flanges are pre-threaded for easy bolt on assembly.
- Pitched, adjustable pitch/adjustable height, welded, different height, isolation and calculated curbs are available.

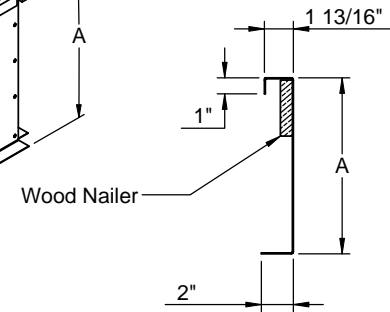
- NOTES**
- Attach ductwork to roof curb. Flanges of duct rest on top of the curb. Support ductwork below the curb.



6 1/2" For 30" Height  
17 1/2" For 41" Height



CORNER DETAIL



CROSS SECTION DETAIL



3847 WABASH DR.  
MIRA LOMA, CA 91725

PHONE (951) 685-1101  
FAX (619) 872-9799

SUBMITTED TO: \_\_\_\_\_  
 COMPANY: \_\_\_\_\_  
 JOB NAME: \_\_\_\_\_  
 EQUIPMENT: \_\_\_\_\_  
 NOTES: \_\_\_\_\_

FORM NO:  
-

DATE:  
12/18/2014

PART NUMBER:  
CBKDHDBX Series

REV:  
-

DRAWN BY:  
CNG