



## INSTALLATION INSTRUCTIONS

### OAMANAFF1860100 0-100% Manual Outside Air Package OA2POAFF1860100BL 0-100% Selectable 2 Position Outside Air Package for York Affinity 1½ - 5 Ton Units

**PLEASE NOTE:** If the unit is 208/230V, single phase, power supply, the installed 40VA transformer may need to be replaced with a 75VA transformer and circuit breaker. All other factory units have the 75VA transformer installed standard.

| PARTS INCLUDED              | QTY. |
|-----------------------------|------|
| #10 x 1/2 Sheet Metal Screw | 3    |
| #8 x 1/2 Sheet Metal Screw  | 3    |
| Wire Clamp                  | 3    |

### Before Starting Installation

#### Warning

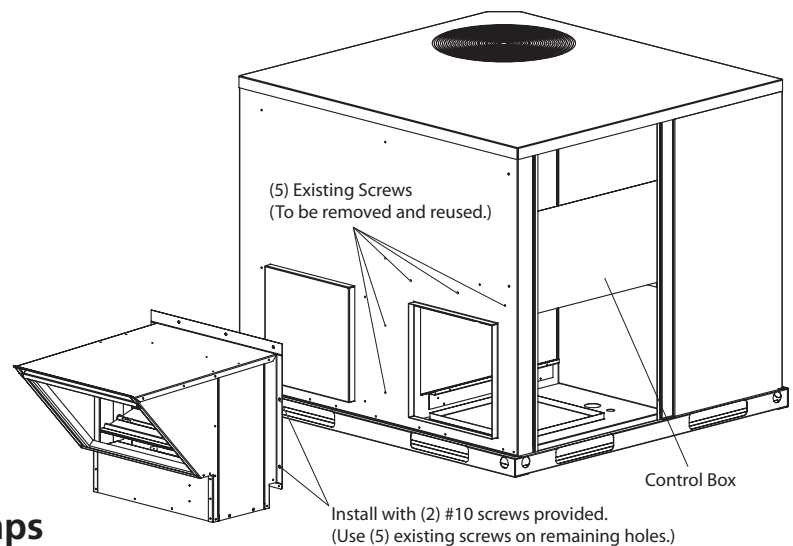
Shut power to unit prior to any work being done. Personal injury or death could result.

Only qualified HVAC service personnel should install, troubleshoot, repair or service HVAC and related HVAC equipment.

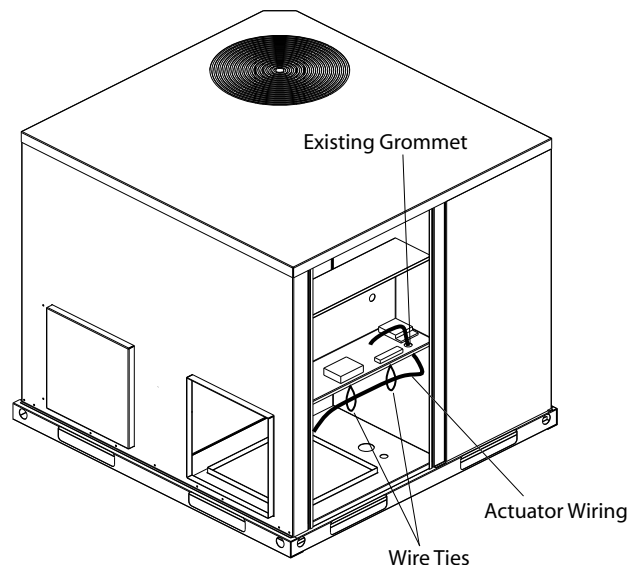
### Installation of Cooling Only & Heat Pumps

1. Remove electrical/filter access panel. (ILL. 1)
2. Remove the (5) screws shown in ILL. 1. Save these screws. They will be reinstalled later.  
**Please note: If a filter rack is to be installed, do it at this time.**
3. Open the electrical access panel. (ILL. 1)
4. Set outside air package in place aligning prepunched holes to the (5) screws removed earlier. Secure in place. Install (2) additional #10 screws provided. (ILL. 1)
5. For OAMANAFF1860100 manual outside air package, set damper to desired open area and tighten locking quadrant located on the left side when facing the opening.

ILL. 1



ILL. 2



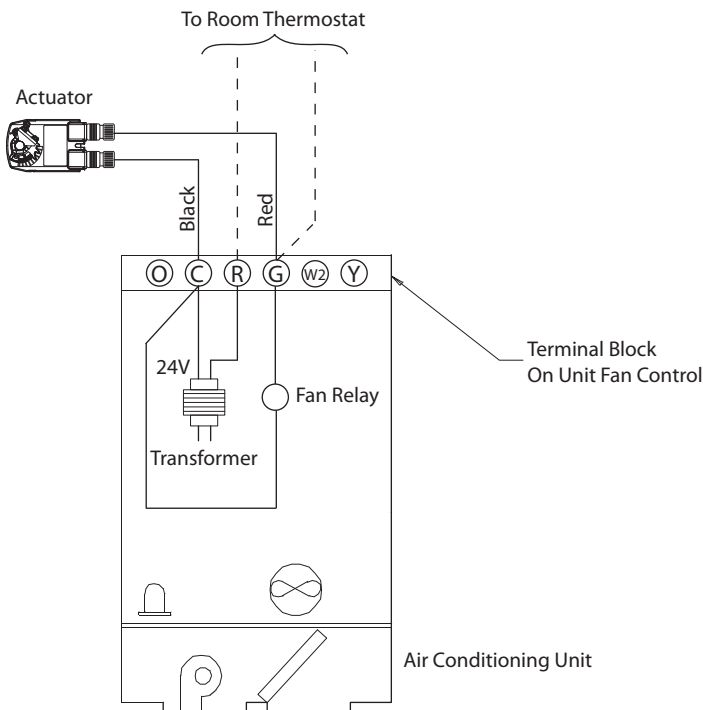
- For OA2POAFF1860100BL 2-position outside air package, route actuator wiring through the two ties found under the control box. (ILL. 2) Additional wire clamps are provided for securing wire after completion, if needed

Route actuator wiring through prepunched grommet into control box. (ILL. 2)

Connect actuator wiring to terminal block in control box. (ILL. 3)

The actuator is factory set to minimum open position. To increase open position, loosen set screw on limiter of actuator (Be careful not to remove screw completely. Just loosen.). Move limiter to desired open position and secure set screw. (ILL. 4)

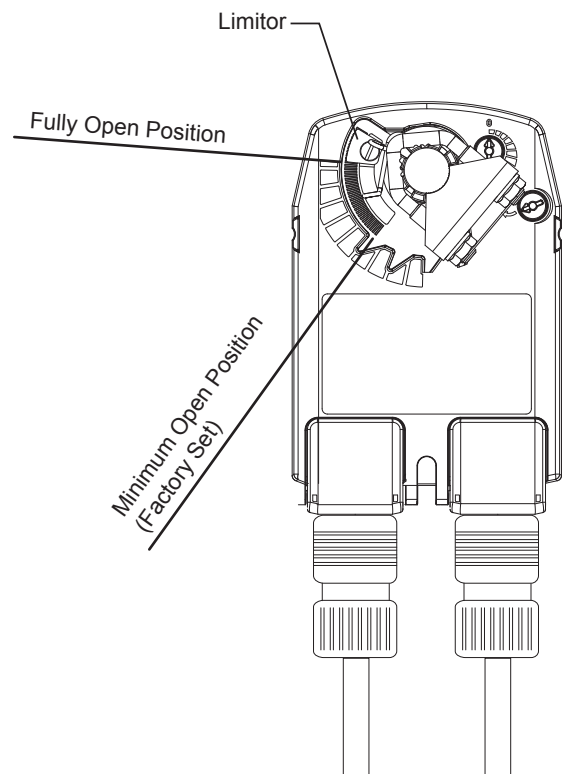
**ILL. 3**



**PLEASE NOTE:**

If the unit is 208/230V, single phase, power supply, the installed 40VA transformer may need to be replaced with a 75VA transformer and circuit breaker. All other factory units have the 75VA transformer installed standard.

**ILL. 4**



## Installation of Cooling with Gas Heat Units

1. Remove control panel from the unit as shown in **ILL. 5**.
2. Follow previous instructions 1 through 4 from cooling and heat pump instructions.
3. Install three wire clamps (provided) along the bottom of heating coil section. (**ILL. 5**)
4. Remove grommet holding the fan wiring between panel and control box. (**ILL. 5**) Route actuator wiring through removed grommet. Reinstall grommet.
5. Connect actuator wiring to terminal block in control box. (**ILL. 3**)
6. The actuator is factory set to minimum open position. To increase open position, loosen set screw on limiter of actuator (Be careful not to remove screw completely. Just loosen.). Move limiter to desired open position and secure set screw. (**ILL. 4**)

